



EWVG恩威
电力金具选型手册



EWVG恩威
我们的努力,让客户感动!



浙江恩威电气有限公司
ZHEJIANG ENWEN ELECTRICAL CO.,LTD.

厂址: 乐清柳市镇薛宅工业区
销售地址: 柳市新电器城外围16-2号
销售电话: 0577-61752057 61516187
传真: 0577-61757057
网址: www.enweidq.com

本书采用可回收 ④ 版式设计恩威电气有限公司所有
本书由温州市新印务有限公司设计、印刷 TEL: 0577-62788877

浙江恩威电气有限公司
ZHEJIANG ENWEN ELECTRICAL CO.,LTD.

铸就品牌

有一种力量，让我们前行。

有一种力量，让我们辉煌。

有一种力量，成就我们的梦想。

超越梦想不是梦想，相信品牌的力量。



公司简介 Company profile



浙江恩威电气有限公司是一家生产电力金具的企业，座落在中国低压电器之都柳市镇，其海陆交通十分便利。

本公司集科研开发、制造、销售于一体，专业生产电力金具系列、预绞式金具、铜排、铝排及型材、管材、铜铝爆炸焊制品、冷热缩电缆附件、复合绝缘子、电缆分接箱、隔离开关、熔断器、其他相关周边配套产品。

本公司的竞争力来自于人才和实力。企业一贯重视科技人员的引进与培养，庞大的技术职工队伍，勇于创新的科技尖兵使企业的技术力量日趋雄厚。近几年来，为我国电力金具的更新换代和新产品的开发做出了贡献。

雄厚的技术力量、先进的工艺装备、齐全的检测手段，使企业的产品质量不断提高。质量创造品牌，品牌赢得市场。近年来，企业立足于创建中国一流金具制造企业，打造世界领先金具品牌的共同愿景，在广大职工中积极培树“责任、诚信、业绩、变革、服务、和谐”的核心价值观。以市场为导向，坚持“战略为纲、创新为魂、以诚取信、以质取胜”的大市场理念，弘扬“求实、求新、求信、争先”的企业精神，全厂上下群策群力、团结奋斗、锐意进取、勇于创新、真抓实干，紧紧抓住了国家电网建设战略机遇期，开创了企业波澜壮阔的大市场前景。

伴随着国家电网建设的腾飞，浙江恩威电气有限公司正以饱满的热情和雄厚的实力积极投身于国家电网建设的大潮中。我们将一如既往地奉行：“顾客至上，质量第一”的经营宗旨，实施以顾客为中心的营销战略，不断为顾客提供优质的产品和满意的服务！

DARES TO CHALLENGE

团结合作

合作 团结 发展 交流 共赢

THE COOPERATION UNITY DEVELOPMENT EXCHANGE ALTOGETHER WINS



DARES TO CHALLENGE

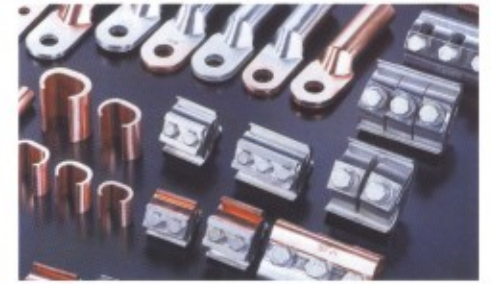
创新未来

合作 团结 发展 交流 共赢

THE COOPERATION UNITY DEVELOPMENT EXCHANGE ALTOGETHER WINS



Urban & rural power Network fittings 城乡配网金具



NLL 系列螺栓型铝合金耐张线夹及绝缘罩

L series aluminium alloy strain clamp and insulation cover(bolt type)

■ 用途 Application:

NLL系列螺栓型铝合金耐张线夹适用于20kV及以下架空线路中，在耐张杆上固定铝绞线或钢芯铝绞线，用于架空绝缘铝导线和绝缘罩配套使用，起绝缘防护作用。

NLL series aluminium alloy strain clamp(Bolt type)is suitable for aerial line up to 20kV,fixing aluminium wire or steel core minium wire on the strain pole,aerial insulation aluminium conductor and insulation aluminium cover are being used together,and the action is insulation protection.

■ 结构特点 Structure featu re

- ◆ 夹体采用高强度铝合金制造
- ◆ 外表光洁，使用寿命长
- ◆ 安装使用方便
- ◆ 无磁滞损耗，是节能认证产品。
- ◆ The body is made of high-strength aluminium alloy
- ◆ Smooth surface long servile life
- ◆ Easy installation
- ◆ No waste electric energy

■ 绝缘罩性能特点 Insulation cover performance feature

- ◆ 1-10kV 产品工频耐压: $\geq 18kV$ 保压 1 分钟不击穿
- ◆ 20kV产品工频耐压: $\geq 30kV$ 保压 1 分钟不击穿
- ◆ 绝缘电阻: $> 1.0 \times 10^{14} \Omega$
- ◆ 环境温度: $-30^{\circ}C \sim 90^{\circ}C$
- ◆ 耐候性性能: 经人工气候老化试验 1008 小时后性能良好
- ◆ 1-10kV products Withstand voltage: $\geq 18kV$ keep voltage one minute not breakdown
- ◆ 20kV products Withstand voltage: $\geq 30kV$ keep voltage one minutenot breakdown
- ◆ Insulation resistance: $>1.0 \times 10^{14} \Omega$
- ◆ Environments temperature: $-30^{\circ}C \sim 90^{\circ}C$
- ◆ Weather proof performance:have good performed after 1008 hours artificial climate aging test.



■ 规格及技术参数 Specification

(线路用)

型号 Catalog No.	适用导线 Conductor(mm ²)	U 形螺丝 U bolt		标称破坏荷载 Specified Failure Load(kN)
		个数	直径	
NLL-1	5.0~10.0	2	12	40
NLL-2	10.1~14.0	2	12	40
NLL-3	14.1~18.0	3	14	70
NLL-4	18.1~23.0	3	14	90
NLL-27	12.48~21.66	4	16	90
NLL-5L	23~26	3	16	90
NLL-5	23~29	4	16	120
NLL-6	25.9~32.67	4	18	120

(配变用电)

型号 Catalog No.	适用铝绞线型号 Applicable aluminum stranded Conductor type(mm ²)	U 形螺丝 U bolt		标称破坏荷载 Specified Failure Load (kN)
		个数	M	
NLD-2L	LJ-35-95	2	M12	30
NLD-3L	LJ-120-150	2	M12	40
NLD-4L	LJ-185-240	2	M14	50
NLD-5L	LJ-240-300	2	M14	70
NLD-190	16~70(5.1~11.4)	2	M12	40
NLD-230	50~95(8.5~13.87)	2	M12	40
NLD-285	70~150(11.4~17.1)	2	M12	70
NLD-320	120~185(13~18.9)	2	M12	70

■ 规格及技术参数 Specification

型号 Cat.No.	适用导线直径范围 Conductor Diameter(mm)	适用导线标称截面 Conductor Range(mm ²)			握力 Min.Grip Strength(kN)	标称破坏荷载 Failure Load(kN)	配套绝缘罩 Insulation Cover
		钢芯铝绞线 ACSR(LGJ)	绝缘铝绞线(Jkly) Insulated Aluminum Conductor				
			剥皮 Stripping	不剥皮 Overall			
NXL-1	8.0-12.0	35/6~70/10	50-95	-	9.0	16.4	NXL-50~95
NXL-2	12.0-15.6	70/40~95/20	120-150	25-50	13.6	25.2	120~150
NXL-3	15.0-19.0	95/55~185/10	185-240	70-95	22.5	41.5	NXL-185~240 300
NXL-4	18.4-23.0	185/25~240/30	240-300	120-150	28.2	51.6	
	22.6-26.4	240/50~300/10	300-400	185-240			

型号 Catalog No.	适用导线 截面 section (mm ²)	剥线长度 Length (mm)	握力 Grip Strength (kN)	标称破坏荷载 Specified Failure Load (kN)	配套绝缘罩 Insulation cover type	型号 Catalog No.	适用导线 截面 section(mm ²)	线缆外径 Dia(mm)	握力 Grip Strength (kN)	标称破坏荷载 Specified Failure Load (kN)	配套绝缘罩 Insulation cover type	剥线长度 (mm)
NXL-1 (20kV)	50	245	5.16	14.50	NXL-1-2 (20kV)	NXL-2J (20kV)	JKLYJ-20/25	Φ18.2	2.5	10.8	NXL-2J (20kV)	不剥皮
	70		7.12									
	95		9.40									
NXL-2 (20kV)	120	255	12.70	23.40	NXL-3J (20kV)	JKLYJ-20/50	Φ20.5	4.6	22.1	NXL-3J~4J (20kV)	不剥皮	
	150		15.20									
NXL-3 (20kV)	185	300	18.50	36.30	NXL-3 (20kV)	JKLYJ-20/70	Φ22	6.7	36.4	NXL-5J (20kV)	不剥皮	
	240		23.60									
NXL-4J (20kV)	JKLYJ-20/120	Φ25.2	11.3	45.5	NXL-5J (20kV)	JKLYJ-20/185	Φ28.3	17.3	28.2	NXL-5J (20kV)	不剥皮	
	JKLYJ-20/150	Φ26.7	13.6									
	JKLYJ-20/240	Φ30.36	22.5									
NXL-5J (20kV)	JKLYJ-20/300	Φ32.8	28.2	45.5	NXL-5J (20kV)	JKLYJ-20/300	Φ32.8	28.2	45.5	NXL-5J (20kV)	不剥皮	
	JKLYJ-20/185	Φ28.3	17.3									



NXJ 系列楔型绝缘耐张线夹

NXJ Series insulation strain clamp (wedge type)

■ 用途 Application:

NXJ 系列适用于 20kV 及以下架空绝缘铝芯线(JKLYJ)的终端或耐张段两端和绝缘子串一起，将架空绝缘导线固定和拉紧。产品按导线规格分别配有不同的塑料楔芯。

NXJ series is suitable for strain clamp insulation string of 20kV aerial insulation aluminium core wire JKLYJ terminal or two ends fixing and tighten aerial insulation

■ 结构特点 Structure feature

- ◆ 壳体采用抗氧化高强度铝合金铸造，无磁滞损耗。
- ◆ 楔芯采用绝缘增强塑料，绝缘性能好。
- ◆ 电缆不需剥除绝缘层，即可直接安装。
- ◆ 楔形结构，安装简便可靠
- ◆ The shell made of anti-oxidate high strength aluminium alloy, Without waste power
- ◆ The core of wedge made of insulating reinforce plastics, 1-10kV withstand voltage : ≥ 18 kV not breakdown one min. 20kV withstand voltage : ≥ 30 kV not breakdown one min.
- ◆ Not need to remove the insulation layer, Al-core wire can be used directly.
- ◆ Wedge structure

■ 1~10kV规格及技术参数 1~10kV Specification

耐张线夹 型号 Strain clamps type	导线规格 Specification(mm ²)	架空绝缘铝导线/1kV Aerial insulation aluminium conductor/1kV		架空绝缘铝导线/10kV Aerial insulation aluminium conductor/ 10kV		握力 Grip Strength (kN)	标称破坏荷载 Specified Failure Load(kN)
		导线外径 Dia(mm)	选用楔芯 Applicable wedge core	导线外径 Dia(mm)	选用楔芯 Applicable wedge core		
NXJ-1Q	25	Φ8.4	1kV/25	Φ14.8	10kV/25/35	2.5	10.8
	35	Φ9.8	1kV/35			3.4	
	50	Φ11.2	1kV/50			4.6	
	70	Φ12.8	1kV/70			6.7	
NXJ-2Q	70	Φ12.8	1kV/70	Φ18.8	10kV/70	6.7	22.1
	95	Φ14.8	1kV/95	Φ20.4	10kV/95	8.9	
	120	Φ16.2	1kV/120	Φ21.8	10kV/120	11.3	
NXJ-2QB	70	Φ12.8	1kV/70	Φ18.8	10kV/70	3.7	18.2
	95	Φ14.8	1kV/95	Φ20.4	10kV/95	8.9	
	120	Φ16.2	1kV/120	/	/	11.3	
NXJ-3Q	120	Φ16.2	1kV/120	Φ21.8	10kV/120	11.3	36.4
	150	Φ18.2	1kV/150	Φ23.4	10kV/150	13.7	
	185	Φ20.2	1kV/185	Φ25.0	10kV/185	17.3	
	240	Φ22.6	1kV/240	Φ27.2	10kV/240	22.5	



NXJ-1Q(25~70mm²不锈钢手柄)



NXJ-1Q(25~70mm²铁手柄)



NXJ-1Q(25~70mm²活动手柄)



NXJ-2Q(70~150mm²不锈钢手柄)



NXJ-2QB(70~150mm²铁手柄)



NXJ-2Q(70~150mm²活动手柄)



NXJ-3Q(120~240mm²不锈钢手柄)



NXJ-3Q(120~240mm²铁手柄)



NXJ-3Q(120~240mm²铁手柄)

■ 1~10kV规格及技术参数 1~10kV Specification

耐张线夹 型号 Strain clamps type	导线规格 Specification(mm ²)	架空绝缘铝导线/1kV Aerial insulation aluminium conductor/1kV		架空绝缘铝导线/10kV Aerial insulation aluminium conductor/ 10kV		握力 Grip Strength (kN)	标称破坏荷载 Specified Failure Load(kN)
		导线外径 Dia(mm)	选用楔芯 Applicable wedge core	导线外径 Dia (mm)	选用楔芯 Applicable wedge core		
NXJ-1	35	Φ9.8	Φ11	Φ15.8	Φ17	3.4	14.4
	50	Φ11.2		Φ17.1		4.6	
	70	Φ12.8		Φ18.8		6.7	
	95	Φ14.8		Φ20.4		8.9	
NXJ-2	120	Φ16.5	Φ18	Φ21.8	Φ22	11.3	36.4
	150	Φ18.2		Φ23.4		13.6	
	185	Φ20.2		Φ25.0		17.3	
	240	Φ22.6		Φ27.2		22.5	
NXJ-3	185	Φ20.2	Φ20	Φ25.0	Φ24	17.3	43.4
	240	Φ22.6	Φ22	Φ27.2	Φ27	22.5	
	300	/	/	Φ29.4	Φ30	28.2	



NXJ-1(35~95mm²)



NXJ-2(120~240mm²)



NXJ-3(185~300mm²)

■ 20kV规格及技术参数 20kV Specification

型号 Catalog No.	导线规格 Specification(mm ²)	架空绝缘铝导线/20kV Aerial insulation aluminium conductor/20kV		握力 Grip Strength (kN)	标称破坏荷载 Specified Failure Load(kN)
		导线外径 Dia(mm)	选用楔芯 Applicable wedge core		
NXJ-2Q (1~20kV)	25	Φ18.2	20kV/25	2.5	22.1
	35	Φ19.2	20kV/35	3.4	
	50	Φ20.5	20kV/50	4.6	
	70	Φ22	20kV/70	6.7	
NXJ-3Q (1~20kV)	95	Φ23.7	20kV/95	8.9	36.4
	120	Φ25.2	20kV/120	11.3	
	150	Φ26.7	20kV/150	13.6	
NXJ-4Q (1~20kV)	185	Φ28.3	20kV/185	17.3	45.5
	240	Φ30.6	20kV/240	22.5	
	300	Φ32.8	20kV/300	28.2	



20kV NXJ系列产品(不锈钢手柄)



20kV NXJ系列产品(铁钢手柄)



20kV NXJ系列产品(活动手柄)

架空绝缘导线金具 Aerial insulation conductor fitting

在当今社会生活中，人们对电的依赖性有日俱增，对电网供电的安全性要求也越来越高，尤其是城网的要求更高。因此，城网供电线路以绝缘电缆代替裸线是适时的有效措施之一。同时，金具也应采取对应的措施，使其具有绝缘功能的方法有两种：一是应用绝缘材料，设计新的具有绝缘功能的金具；二是为金具设计绝缘罩达到绝缘效果。

Nowadays, more and more people rely on the electricity, and also pay more attentions to the safety of power supply of the electrical network, especially the town network. Therefore, one of the most effective measures to be taken is to adopt the insulation conductor instead of the bare wire in terms of power supply of town network. Meanwhile, corresponding measures should also be taken for fitting to make it have insulating function, which have two ways one is to use the insulating materials, and to design such kind of fitting which has the insulating function; the other is to design the insulating cover so as to reach the effect of insulation.

NXJ 系列四芯集束型耐张线夹

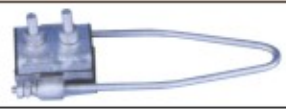


NXJ series four-cores-centralized strain clamp

■ 用途 Application:

NXJ 四芯集束型耐张线夹适用于 1kV 四芯集束导线的终端，起固定并拉紧绝缘导线作用，安装方便，无须剥去绝缘层。采用高强度工程塑料做为内楔，不破坏绝缘性能。握力稳定可靠。

NXJ four-core-centralized strain clamp is suitable for the end of aerial wire terminal, its action is fixing or tightening the insulation conductor. The clamp has been designed four core parallel groove, after clamping the four insulation conductor (not remove the insulation layer) tighten up the bolt to have large grip strength.

■ 规格及技术参数 Specification

型号	适用导线范围(mm ²)	说明	产品图例
NXJ4-1A	4 × 16~50	拉杆式，铝合金本体	
NXJ4-2A	4 × 70~120		
NXJ4-1B	4 × 25~50	拉板式，本体为耐候工程塑料	
NXJ4-2B	4 × 70~120		
NXJ4-3B	4 × 150~185		
NXJ4-2C	4 × 10	铝合金本体，工程塑料内楔	
NXJ4-3C	4 × 16~25		
NXJ4-4C	4 × 35~50		
NXJ4-5C	4 × 70		
NXJ4-6C	4 × 95~120		
NXJ4-1D	4 × 10		
NXJ4-2D	4 × 16		
	4 × 25		
NXJ4-3D	4 × 35		
	4 × 50		
NXJ4-4D	4 × 70		
NXJ4-5D	4 × 95		
	4 × 120		

XJG 型悬挂线夹

XJG series suspension clamps

■ 用途 Application:

XJG 型产品适用于架空电力线路系统中悬挂绝缘导线，有挂钩型和合页型二种产品供用户选择。

XJG Series is suitable for aerial electric wire suspension insulation conductor, it provides steel and aluminium manufacture for users.

■ 规格及技术参数 Specification

类别	型号 Type	适用导线范围 Applicable conductor(mm ²)
挂钩型	XJG-10~16A	4 × 10~16
	XJG-25~35A	4 × 25~35
	XJG-50~70A	4 × 50~70
	XJG-95~120A	4 × 95~120
合页型	XJG-10~16B	4 × 10~16
	XJG-25~35B	4 × 25~35
	XJG-50~70B	4 × 50~70
	XJG-95~120B	4 × 95~120

XJG 型产品用于 20kV 架空电力线路系统中悬挂绝缘铝导线。

线夹型号 Clamp Catalog NO.	20kV 架空绝缘导线 20 kV Aerial Insulation	
	导体截面(mm ²)	导体外径(mm ²)
XJG-0B(20kV)	JKLYJ-20/25	Φ18.2
	JKLYJ-20/35	Φ19.2
	JKLYJ-20/50	Φ20.5
	JKLYJ-20/70	Φ22.0
XJG-1B(20kV)	JKLYJ-20/95	Φ23.7
	JKLYJ-20/120	Φ25.2
	JKLYJ-20/150	Φ26.7
XJG-2B(20kV)	JKLYJ-20/185	Φ28.3
	JKLYJ-20/240	Φ30.6
	JKLYJ-20/300	Φ32.8



挂钩型



合页型



出口型

设备线夹 Terminal connector

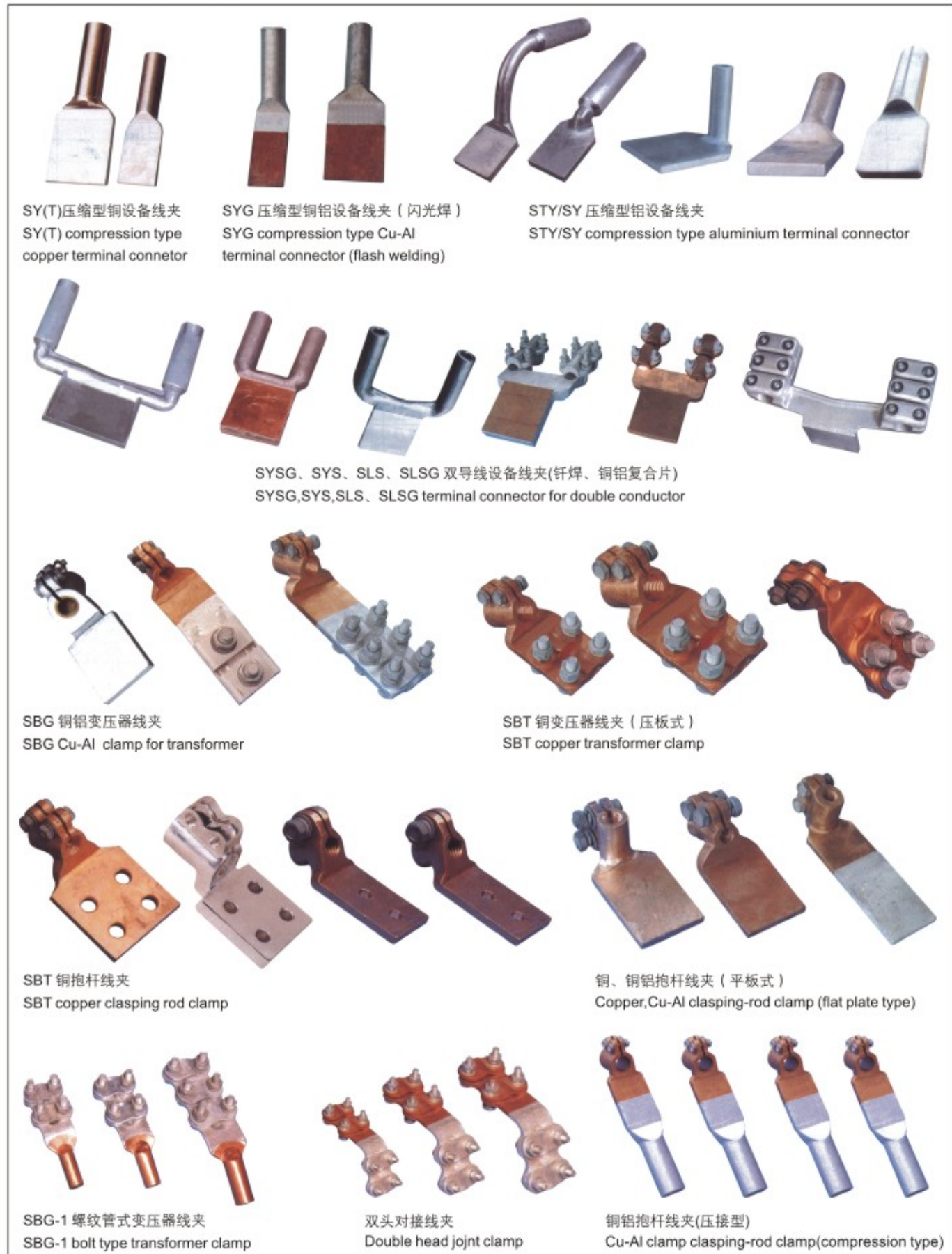
设备线夹主要用于变电所母线引下线与电气设备(如变压器、断路器、隔离开关、穿墙套管等)的出线端子接续,因常用电气设备的出线端子有铜质和铝质两类,而母线引出线分为铝绞线或钢芯铝绞线,故设备线夹从材质上分为铝设备线夹和铜铝过渡设备线夹两个系列。根据安装方法和结构形式的不同,设备线夹分螺栓型、压缩型两种类型。每种型式的线夹又按引下线与安装电气设备端子所成角的不同分为0°、30°、90°三种。

DTL系列铜铝接线端子适用于配电装置铝芯电缆与电气设备铜端的过渡连接;DL铝端子用于铝芯电缆与电气设备的铝端连接;DT铜端子用于铜芯电缆与电气设备铜端连接。我公司另有采用爆炸焊工艺生产的铜铝接线端子和设备线夹。具有焊缝强度高,电气性能优良,抗电化腐蚀,使用寿命长,不会断裂,安全性高的特点。

Terminal connectors are used to connect tap conductor to power equipments(transformer,circuit breaker,disconnect switch.etc)or to wall bushing of substation.Aluminium connectors are also used to connect the tap conductor of T-conductor.The connectors include compressive-type and bolted,both types have angle of 0°、30° and 90° with the direction of tap conductor.

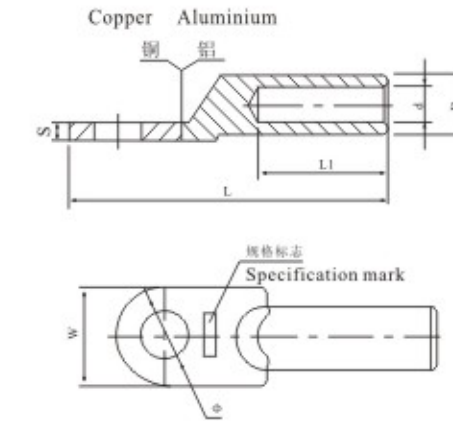
DTL series Al-Cu connection terminal is suitable for transition joint of distribution device aluminium core cable and electric equipment.DL aluminium is used for aluminium terminal linking of aluminium core cable and electric equipment.DT copper terminal is used for copper terminal electric equipment.DT copper terminal is used for copper terminal linking of copper core cable and electric equipment.The products adopt friction welding workmanship,Our company supplies Cu-Al terminal and wire clamp made by explosive welding technique.The products have features as high welding strength,excellent electric property,resistance to galvanic corrosion,long semice life,never fracture,high safety,etc.





铜铝接线端子

Copper-Aluminium connecting terminals



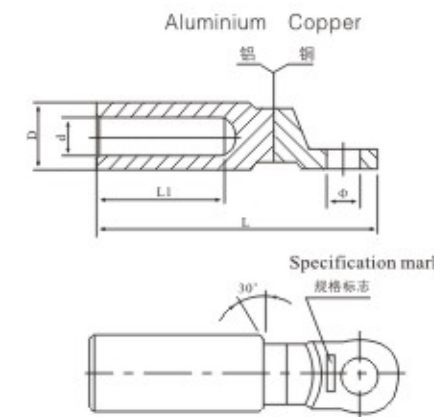
1) 铜铝接线端子

Copper-Aluminium connecting terminals

型号 Catalog No.	Φ	D	d	L	L1	W	S
DTL-1-10	8.4	10	5	65	32	16	2.7
DTL-1-16	8.4	10	5.5	70	32	16	3
DTL-1-25	8.4	12	7	75	34	18	3.5
DTL-1-35	10.5	14	8.5	85	40	20	3.5
DTL-1-50	10.5	16	9.5	90	42	23	4
DTL-1-70	12.5	18	12	102	47	26	4.5
DTL-1-95	12.5	21	13	112	50	28	5
DTL-1-120	14.5	23	15	120	53	30	5.5
DTL-1-150	14.5	25	16	126	55	34	6
DTL-1-185	16.5	27	18	133	58	37	6.5
DTL-1-240	16.5	30	20	140	60	40	7.5
DTL-1-300	21	34	23	165	65	45	8.5
DTL-1-400	21	38	26	170	70	52	9.5
DTL-1-500	21	42	29	190	75	60	10
DTL-1-630	-	54	34	225	80	78	10.5
DTL-1-800	-	60	38	270	90	100	11

2-1) 铜铝接线端子(出口型)

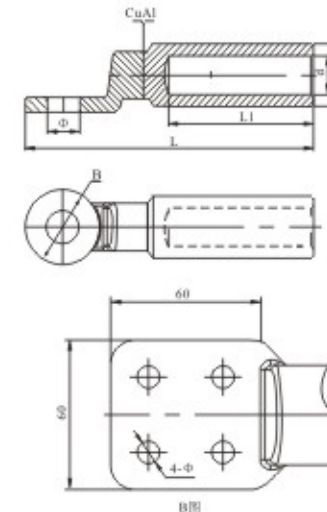
Bimetallic compression lug Cu-Al



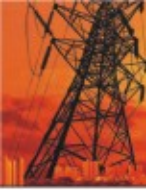
型号 Catalog No.	主要尺寸 Dimensions(mm)				
	Φ	D	d	L	L1
DTL-2-16	8.5	16	5.5	90	42
DTL-2-25	8.5	16	6.5	90	42
DTL-2-35	8.5	16	8	90	42
DTL-2-50	13	20	9	90	43
DTL-2-70	13	20	11	90	43
DTL-2-95	13	20	12.5	90	43
DTL-2-120	13	25	13.7	115	60
DTL-2-150	13	25	15.5	118	60
DTL-2-185	13	32	17.5	122	60
DTL-2-240	13	32	19.5	122	60
DTL-2-300	13	34	22.5	125	62

2-2) 铜铝接线端子(出口型)

Cu-Al connecting terminals

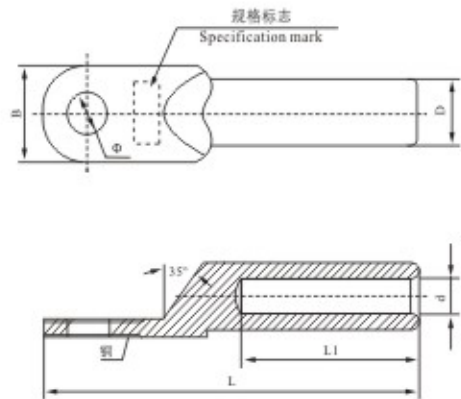


型号 Catalog No.	主要尺寸 Dimensions(mm)					
	Φ	D	d	L	L1	B
CAU-16	10.5	16	5.5	75	32	20
CAU-25	10.5	16	6.5	75	32	20
CAU-35	12.8	16	8	86	38	25
CAU-50	12.8	20	9	86	38	25
CAU-70	12.8	20	11	86	38	25
CAU-95	12.8	20	12.5	86	38	25
CAU-120	12.8	25	13.7	115	58	30
CAU-150	12.8	25	15.5	115	58	30
CAU-185	12.8	32	17	115	58	30
CAU-240	12.8	32	19.5	115	58	30
CAU-300	16.5	40	23.3	153	88	36
CAU-400	16.5	40	26	153	88	36
CAU-500	B 图	47	29.1	200	100	B 图
CAU-630		47	32.5	200	100	



3) 铜铝接线端子(爆炸焊)

Cu-Al terminal (Explosive welding)



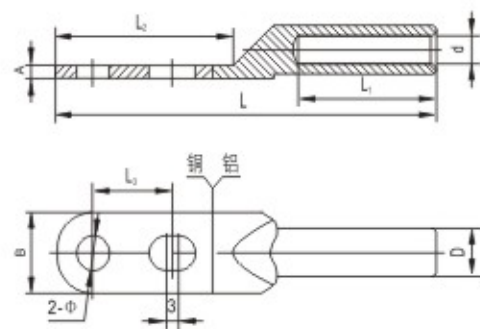
型号 Catalog No.	主要尺寸 Dimensions(mm)					
	Φ	D	d	L	L1	B
DTLB-10	8.5	10	5	65	32	16
DTLB-16	8.5	10	5.5	70	32	16
DTLB-25	8.5	12	7	75	34	18
DTLB-35	10.5	14	8.5	85	40	20.5
DTLB-50	10.5	16	9.7	90	42	23
DTLB-70	12.5	18	11.5	102	47	26
DTLB-95	12.5	21	13.5	112	50	28
DTLB-120	14.5	23	15	120	53	30
DTLB-150	14.5	25	16.5	126	55	34
DTLB-185	16.5	27	18.5	133	58	37
DTLB-240	16.5	30	21	140	60	40
DTLB-300	21	34	23	165	62	50
DTLB-400	21	34	26.5	170	70	50
DTLB-500	21	42	29.5	190	75	60

采用爆炸焊工艺制造。

Clamp bodies are made of aluminium ,the other parts are steel and hot-dip galvanized.

4) 铜铝接线端子(双孔型)

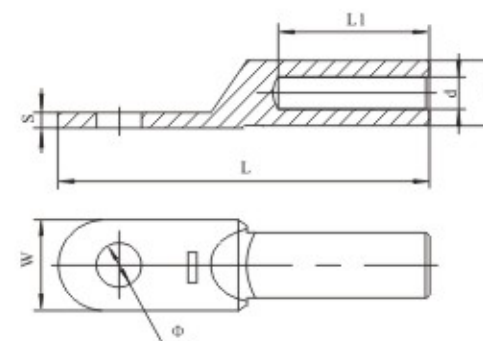
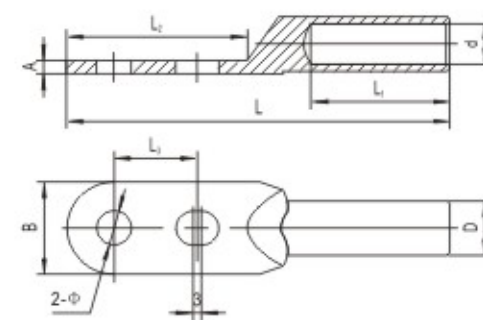
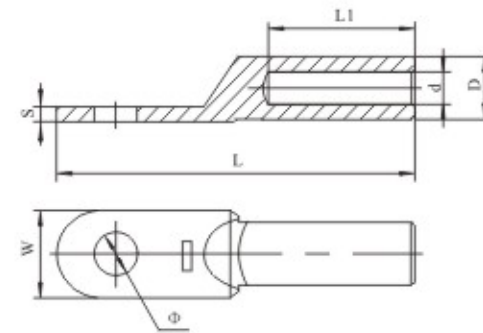
Cu-Al terminal (dual hole type)



型号 Catalog No.	主要尺寸 Dimensions(mm)								
	Φ	D	d	L	L1	L2	L3	B	A
DTL-16S	8.4	10	5.5	90	32	45	20	18	3
DTL-25S	8.4	12	7	95	34	45	20	20	3.2
DTL-35S	8.4	14	8.5	107	40	50	20	23	3.6
DTL-50S	8.4	16	9.7	115	42	50	20	23	4
DTL-70S	10.5	18	11.5	128	47	62	25	28	4.5
DTL-95S	10.5	21	13.5	138	50	62	25	28	4.8
DTL-120S	12.5	23	15	152	53	72	30	34	5.5
DTL-150S	12.5	25	16.5	155	55	72	30	34	6
DTL-185S	12.5	27	18.5	168	58	80	35	40	6.7
DTL-240S	12.5	30	21	172	60	80	35	40	7
DTL-300S	16.5	34	23	195	65	90	40	50	8.5
DTL-400S	16.5	38	26	200	70	90	40	50	9

铜、铝接线端子

Cu-Al connecting terminals



1) 铜接线端子(堵油)Copper connecting terminals(oil-plugging)

型号	Φ	D	d	L	L1	W	S
DT-10	8.4	9	5.5	66	30	16	2.2
DT-16	8.4	10	6	67	31	16	2.5
DT-25	8.4	11	7	70	34	18	3
DT-35	10.5	12	8.5	79	36	20	3
DT-50	10.5	14	9.6	87	40	23	3.5
DT-70	12.5	16	12	95	44	26	4
DT-95	12.5	18	13	105	47	28	4.5
DT-120	14.5	20	15	112	50	30	5
DT-150	14.5	22	16	118	54	34	5.5
DT-185	16.5	25	18	125	56	38	6
DT-240	16.5	27	20	136	60	42	7
DT-300	21	30	23	160	65	48	8
DT-400	21	34	26	165	70	54	9
DT-500	-	38	29	190	75	64	9.5
DT-630	-	45	34	220	85	78	10
DT-800	-	50	38	260	85	100	10.5

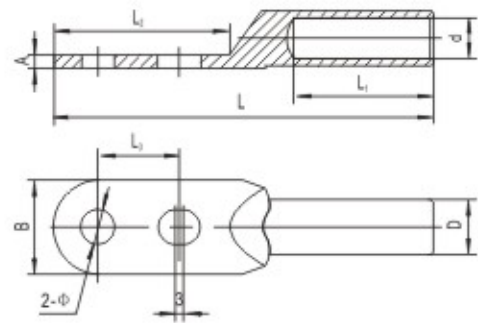
2) 铜接线端子(双孔型) Cu terminal(dual hole type)

型号 Catalog No.	主要尺寸 Dimensions(mm)								
	Φ	D	d	L	L1	L2	L3	B	A
DT-10S	8.4	9	5.5	87	30	41	20	16	3
DT-16S	8.4	10	6	93	31	47	20	18	3
DT-25S	8.4	11	7	93	34	47	20	20	3
DT-35S	8.4	12	8.5	102	36	50	20	23	3
DT-50S	8.4	14	9.6	107	40	52	20	23	3
DT-70S	10.5	16	12	118	44	58	25	28	4
DT-95S	10.5	18	13	126	47	60	25	28	4
DT-120S	12.5	20	15	138	50	65	30	34	4
DT-150S	12.5	22	16	142	54	67	30	34	5
DT-185S	12.5	25	18	160	56	77	35	40	6
DT-240S	12.5	27	20	165	58	77	35	40	6.5
DT-300S	16.5	30	23	178	62	80	40	50	8.5
DT-400S	16.5	34	26	188	70	83	40	50	9

3) 铝接线端子(堵油) Aluminium connecting terminals(oil-plugging)

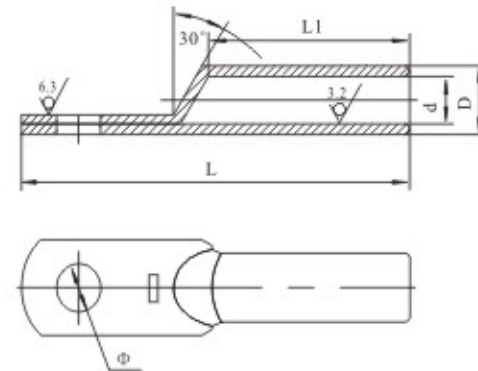
型号	Φ	D	d	L	L1	W	S
DL-1-16	8.4	10	5.5	70	32	16	3
DL-1-25	8.4	12	7	75	34	18	3.5
DL-1-35	10.5	14	8.5	85	40	20	3.5
DL-1-50	10.5	16	9.5	90	42	23	4
DL-1-70	12.5	18	12	102	47	26	4.5
DL-1-95	12.5	21	13	112	50	28	5
DL-1-120	14.5	23	15	120	53	30	5.5
DL-1-150	14.5	25	16	126	55	34	6
DL-1-185	16.5	27	18	133	58	37	6.5
DL-1-240	16.5	30	20	140	60	40	7.5
DL-1-300	21	34	23	165	65	45	8.5
DL-1-400	21	38	26	170	70	52	9.5
DL-1-500	21	42	29	190	75	60	10
DL-1-630	-	54	34	225	80	78	10.5
DL-1-800	-	60	38	270	90	100	11

4) 铝接线端子(双孔型) Al terminal(dual hole type)



型号 Catalog No.	主要尺寸 Dimensions(mm)								
	Φ	D	d	L	L ₁	L ₂	L ₃	B	A
DL-16S	8.4	10	5.5	93	32	45	20	18	3.2
DL-25S	8.4	12	7	95	34	45	20	20	3.5
DL-35S	8.4	14	8.5	105	40	50	20	23	3.6
DL-50S	8.4	16	9.5	115	42	50	20	23	4.2
DL-70S	10.5	18	12	128	47	62	25	28	4.6
DL-95S	10.5	21	13	135	50	62	25	28	4.8
DL-120S	12.5	23	15	148	53	72	30	34	5.3
DL-150S	12.5	25	16	155	55	72	30	34	5.8
DL-185S	12.5	27	18	165	58	80	35	40	6.7
DL-240S	12.5	30	20	170	60	80	35	40	7.5
DL-300S	16.5	34	23	195	65	90	40	50	9
DL-400S	16.5	38	26	200	70	90	40	50	9

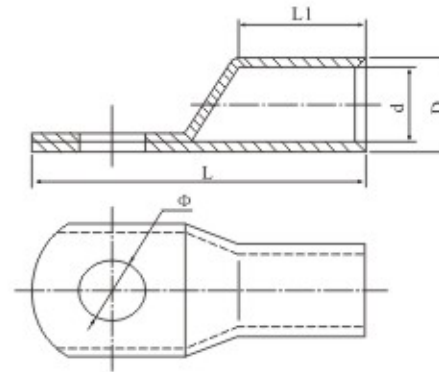
5) 铜接线端子(管料) Copper connecting terminals(tubing)



型号 Catalog No.	主要尺寸 Dimensions(mm)				
	Φ	D	d	L	L ₁
DT-(G)-10	4.5	8	5	50	31
DT-(G)-16	6.5	9	6	57	31
DT-(G)-25	6.5	10	7	62	34
DT-(G)-35	6.5	11	8	66	36
DT-(G)-50	8.5	13	10	72	40
DT-(G)-70	10.5	16	11.5	80	42
DT-(G)-95	10.5	18	13.5	87	46
DT-(G)-120	12.5	20	15	96	48
DT-(G)-150	12.5	22	16.5	103	52
DT-(G)-185	12.5	25	18.5	105	55
DT-(G)-240	12.5	27	21	120	60
DT-(G)-300	17	31	24	135	65
DT-(G)-400	21	34	26.5	150	70
DT-(G)-500	21	38	30	170	75
DT-(G)-630	21	45	35	210	85

铜管压端子

Copper pipe-pressed terminal



1) 铜接线端子

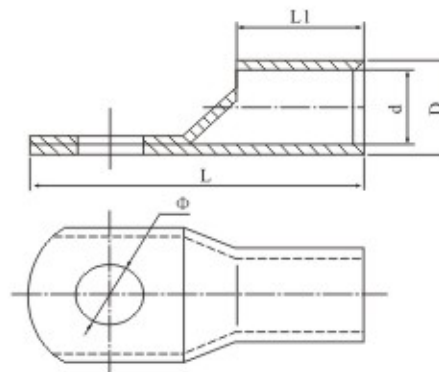
Copper connecting terminals

型号 Catalog No.	主要尺寸 Dimensions(mm)				
	D	d	Φ	L	L ₁
JG-4	4.8	3.1	6.2	21	6.4
JG-6	5.5	3.8	6.2	24	9
JG-10	6.8	4.8	6.2	25.5	10
JG-16	7.5	6.5	8.2	30.5	12
JG-25	9.0	7.0	8.2	34	14
JG-35	10.5	8.2	10.5	38	14
JG-50	12.5	9.8	10.5	45	18
JG-70	14.5	11.5	12.5	50	18.6
JG-95	17.5	13.8	12.5	55.5	23.5
JG-120	19.5	15.5	12.5	63	24
JG-150	20.5	16.5	16.5	71	26
JG-185	23.5	18.8	16.5	78	33
JG-240	26.5	21	16.5	92	37
JG-300	30	24	16.5	102	39.5
JG-400	34	26.5	16.5	113	46
JG-500	38	30	20.5	123	50
JG-630	45	35	20.5	135	

注：表中型号字母意义为：D-接线端子；T-铜；GY-管料压接；数字-导线规格

2) 窥口铜接线端子

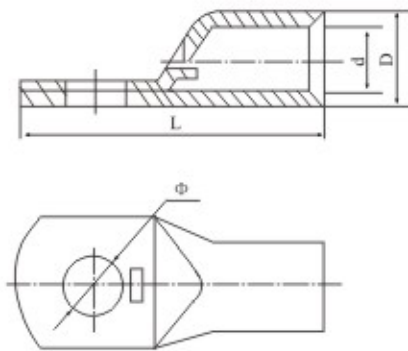
Spy hole copper connecting terminals



型号 Catalog No.	主要尺寸 Dimensions(mm)					型号 Catalog No.
	D	d	Φ	L	L ₁	
SC-4	4.8	3.1	6.2	21	6.4	SC-4
SC-6	5.5	3.8	6.2	24	9	SC-6
SC-10	6.8	4.8	6.2	25.5	10	SC-10
SC-16	7.5	5.5	8.2	30.5	12	SC-16
SC-25	9.0	7.0	8.2	34	14	SC-25
SC-35	10.5	8.2	10.5	38	14	SC-35
SC-50	12.5	9.8	10.5	45	18	SC-50
SC-70	14.5	11.5	12.5	50	18.6	SC-70
SC-95	17.5	13.8	12.5	55.5	23.5	SC-95
SC-120	19.5	15.5	12.5	63	24	SC-120
SC-150	20.5	16.5	16.5	71	26	SC-150
SC-185	23.5	18.8	16.5	78	33	SC-185
SC-240	26.5	21	16.5	92	37	SC-240
SC-300	30	24	16.5	102	39.5	SC-300
SC-400	34	26.5	16.5	113	46	SC-400
SC-500	38	30	20.5	123	50	SC-500
SC-630	45	35	20.5	135	58	SC-630

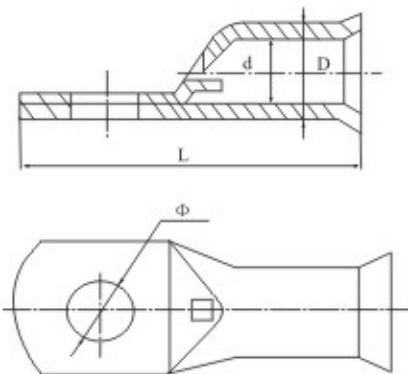
注：表中型号字母意义为：D-接线端子；T-铜；GA-管料压接；数字-导线规格

3) 窥口铜接线端子 Copper spy hole connecting terminals



型号 Catalog No.	主要尺寸 Dimensions(mm)			
	Φ	D	d	L
DTGS-1.5	Φ4.2, Φ5.2	3.5	1.8	18
DTGS-2.5	Φ4.2, Φ5.2, Φ6.2	4	2.5	19
DTGS-4	Φ5.2, Φ6.2	4.8	3.1	21
DTGS-6	Φ5.2, Φ6.2, Φ8.2	5.5	3.8	24
DTGS-10	Φ6.2, Φ8.2	6.8	4.8	25.5
DTGS-16	Φ6.2, Φ8.2, Φ10.5	7.5	5.5	30.5
DTGS-25	Φ6.2, Φ8.2, Φ10.5	9	7	34
DTGS-35	Φ6.2, Φ8.2, Φ10.5, Φ12.5	10.5	8.2	38
DTGS-50	Φ8.2, Φ10.5, Φ12.5	12.5	9.8	45
DTGS-70	Φ8.2, Φ10.5, Φ12.5	14.5	11.5	50
DTGS-95	Φ10.5, Φ12.5	17.5	13.8	55.5
DTGS-120	Φ12.5, Φ16.5	19.5	15.5	63
DTGS-150	Φ12.5, Φ16.5	21	16.5	71
DTGS-185	Φ16.5	23.5	18.8	78
DTGS-240	Φ16.5	26.5	21	92
DTGS-300	Φ16.5, Φ20.5	30	24	102
DTGS-400	Φ16.5, Φ20.5	34	26.5	113
DTGS-500	Φ16.5, Φ20.5	38	30	123
DTGS-630	Φ20.5	45	35	135
DTGS-800	Φ22.5	50	39	170
DTGS-1000	Φ22.5	56	44	200

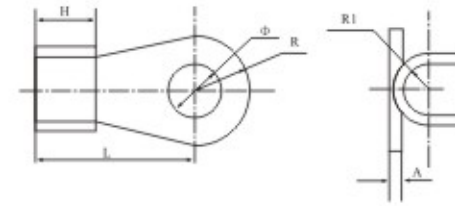
4) 喇叭口型铜接线端子 Bell mouth copper connecting terminals



型号 Catalog No.	主要尺寸 Dimensions(mm)			
	Φ	D	d	L
DTGB-1.5	Φ4.2, Φ5.2	3.5	1.8	18
DTGB-2.5	Φ4.2, Φ5.2, Φ6.2	4	2.5	19
DTGB-4	Φ5.2, Φ6.2	4.8	3.1	21
DTGB-6	Φ5.2, Φ6.2, Φ8.2	5.5	3.8	24
DTGB-10	Φ6.2, Φ8.2	6.8	4.8	25.5
DTGB-16	Φ6.2, Φ8.2, Φ10.5	7.5	5.5	30.5
DTGB-25	Φ6.2, Φ8.2, Φ10.5	9	7	34
DTGB-35	Φ6.2, Φ8.2, Φ10.5, Φ12.5	10.5	8.2	38
DTGB-50	Φ8.2, Φ10.5, Φ12.5	12.5	9.8	45
DTGB-70	Φ8.2, Φ10.5, Φ12.5	14.5	11.5	50
DTGB-95	Φ10.5, Φ12.5	17.5	13.8	55.5
DTGB-120	Φ12.5, Φ16.5	19.5	15.5	63
DTGB-150	Φ12.5, Φ16.5	21	16.5	71
DTGB-185	Φ16.5	23.5	18.8	78
DTGB-240	Φ16.5	26.5	21	92
DTGB-300	Φ16.5, Φ20.5	30	21	102
DTGB-400	Φ16.5, Φ20.5	34	26.5	113
DTGB-500	Φ16.5, Φ20.5	38	30	123
DTGB-630	Φ20.5	45	35	135
DTGB-800	Φ22.5	50	39	170
DTGB-1000	Φ22.5	56	44	200

OT 铜开口接线端子

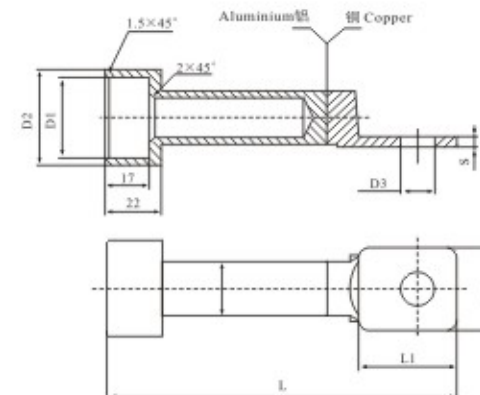
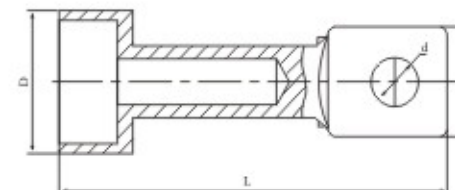
OT copper passing through terminal



型号 Catalog No.	主要尺寸 Dimensions(mm)					
	Φ	H	L	R	R ₁	A
OT-10A	5.2	6	14.5	4.5	2	0.8
OT-20A	6.2	7	17	5.5	2.5	1
OT-30A	6.2	8.2	19	5.8	3.2	1.2
OT-40A	6.2	9	19.5	6.2	3.5	1.2
OT-50A	6.2	9	23	6.5	3.5	1.2
OT-60A	8.2	10	24	7	4	1.4
OT-80A	8.2	11	25	8	4.5	1.5
OT-100A	8.2	12	29	8.5	5	1.5
OT-150A	10.2	12	31	9	5.5	1.6
OT-200A	10.2	14	33	10	6	1.7
OT-250A	10.2	15.5	36	10.5	6.5	2
OT-300A	12.2	16	40	11.5	7	2
OT-400A	14.2	18	43	13	8	2.2
OT-500A	14.2	20	46	14.5	8.5	2.4
OT-600A	16.2	22	50.5	16	10.5	2.8
OT-800A	18.2	26	61	17.5	12.5	3.2
OT-1000A	18.2	33	66	20.5	15.5	3.8

防水型接线端子

Water-proof connecting terminal



1) 防水型铜接线端子 Water-proof copper connecting terminal

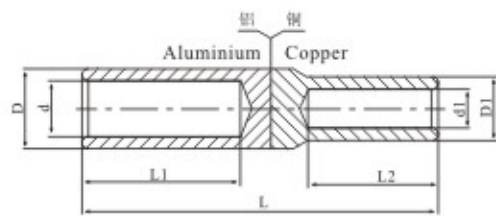
型号 Catalog No.	主要尺寸 Dimensions(mm)			
	B	D	d	L
DT-F-25	26	37	11	110
DT-F-35	26	37	11	110
DT-F-50	26	37	11	112
DT-F-70	30	37	11	114
DT-F-95	30	37	11	114
DT-F-120	32	37	13	126
DT-F-150	32	37	13	126
DT-F-185	36	41	13	134
DT-F-240	40	41	13	136
DT-F-300	40	41	17	141
DT-F-400	44	41	17	178
DT-F-500	44	41	17	184

2) 防水型铜铝接线端子 Water-proof Cu-Al connecting terminal

型号 Catalog No.	主要尺寸 Dimensions(mm)						
	D ₁	D ₂	D ₃	L	L ₁	B	S
DTL-F-25	31	37	11	120	30	26	3.5
DTL-F-35	31	37	11	120	30	26	3.5
DTL-F-50	31	37	11	122	34	30	3.5
DTL-F-70	31	37	11	124	34	30	4.0
DTL-F-95	31	37	11	124	34	30	4.0
DTL-F-120	31	37	13	136	38	32	4.0
DTL-F-150	31	37	13	136	38	32	5.0
DTL-F-185	35	41	13	144	42	36	5.5
DTL-F-240	35	41	13	146	46	40	6.8
DTL-F-300	35	41	17	151	50	40	7.8
DTL-F-400	35	41	17	189	50	44	12.8
DTL-F-500	35	41	17	194	50	44	14.8

铜铝连接管

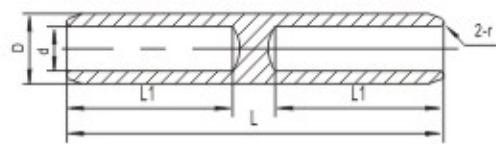
Copper-Aluminium connecting tubes



型号 Catalog No.	主要尺寸 Dimensions(mm)						
	d ₁	D ₁	d	D	L ₁	L ₂	L
GTL-10	4.2	9	5	9	28	28	70
GTL-16	5	9	5.5	10	32	30	75
GTL-25	5.5	10	7	12	34	30	82
GTL-35	7	11	8.5	14	40	30	90
GTL-50	8.5	13	9.7	16	42	32	95
GTL-70	9.7	15	11.5	18	47	38	105
GTL-95	11.5	17	13.5	21	50	40	110
GTL-120	13.5	19	15	23	53	42	112
GTL-150	15	21	16.5	25	55	44	118
GTL-185	16.5	23	18.5	27	68	46	125
GTL-240	18.5	26	21	30	60	50	130
GTL-300	21	29	23	34	65	56	145
GTL-400	23	30	26.5	38	70	60	155
GTL-500	27	34	29.5	42	75	65	165
GTL-630	29	38	34	54	80	70	180

堵油铝、铜连接管

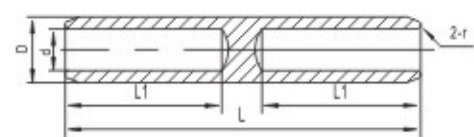
Cu-Al connecting tubes (oil-plugging)



1) 堵油铝连接管 Aluminium connecting tubes (oil-plugging)

型号 Catalog No.	D	d	L	L ₁	r
GL-10	9	4.5	65	28	0.8
GL-16	10	5.5	70	31	0.8
GL-25	12	7	75	32	1
GL-35	14	8.5	85	37	1
GL-50	16	9.5	95	42	1.2
GL-70	18	12	105	46	1.2
GL-95	21	13	110	50	1.5
GL-120	23	15	115	52	1.5
GL-150	25	16	120	55	1.8
GL-185	27	18	125	57	1.8
GL-240	30	20	130	61	1.8
GL-300	34	23	140	65	1.8
GL-400	38	26	150	70	2
GL-500	42	29	160	75	2.2
GL-630	54	34	170	80	4

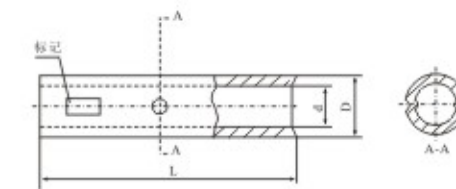
2) 堵油铜连接管 Copper connecting tubes (oil-plugging)



型号 Catalog No.	D	d	L	L ₁	r
GT-10	9	5	62	28	0.7
GT-16	10	6	65	30	0.7
GT-25	11	7	70	32	0.7
GT-35	12	8.5	75	34	0.7
GT-50	14	9.6	80	35	1
GT-70	16	12	90	41	1
GT-95	18	13	95	43	1
GT-120	20	15	100	46	1
GT-150	22	16	105	48	1.2
GT-185	25	18	110	50	1.2
GT-240	27	20	120	55	1.5
GT-300	30	23	130	60	1.5
GT-400	34	26	140	64	1.8
GT-500	38	29	155	70	1.8
GT-630	45	34	170	80	2

GTU 出口铜接线管

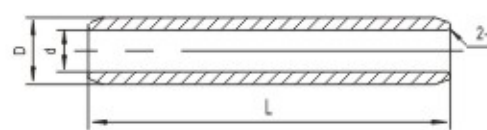
GTU copper connecting tube



型号 Catalog No.	主要尺寸 Dimensions(mm)		
	D	d	L
GTU-1.5	3.7	1.8	20
GTU-2.5	4	2.5	20
GTU-4	4.8	3.1	20
GTU-5.5	5.5	3.8	25
GTU-10	6.8	4.8	30
GTU-16	7.5	5.5	35
GTU-25	9	7	40
GTU-35	10.5	8.2	45
GTU-50	12.5	9.8	50
GTU-70	14.5	11.5	55
GTU-95	17.5	13.5	60
GTU-120	19.5	15	65
GTU-150	21	16.5	70
GTU-185	23.5	18.5	75
GTU-240	26.5	21	80
GTU-300	30	24	85
GTU-400	34	27	90
GTU-500	38	30	100
GTU-630	45	35	110
GTU-800	50	39	150
GTU-1000	56	44	170

通孔铜、铝连接管

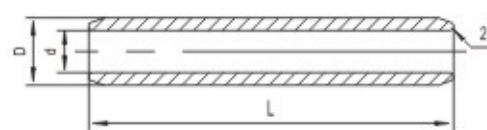
passing through Cu-Al connecting tubes



1) 铜连接管(通孔)Copper connecting tubes (passing through)

型号 Catalog No.	D	d	L	r
GT-G-10	8	5	50	0.5
GT-G-16	9	6	56	0.5
GT-G-25	10	7	60	0.5
GT-G-35	12	8.5	64	0.7
GT-G-50	14	10	72	0.7
GT-G-70	16	12	78	0.7
GT-G-95	18	13	85	0.8
GT-G-120	20	15	90	0.8
GT-G-150	22	16	94	1.2
GT-G-185	25	18	100	1.2
GT-G-240	27	20	110	1.5
GT-G-300	31	24	120	1.5
GT-G-400	34	26	135	1.8
GT-G-500	38	30	150	1.8
GT-G-630	45	35	170	2

2) 铝连接管(通孔)Aluminium connecting tubes (passing through)



型号 Catalog No.	D	d	L	r
GL-G-16	10	5.5	65	0.8
GL-G-25	12	7	70	1
GL-G-35	14	8.5	75	1
GL-G-50	16	9.5	80	1.2
GL-G-70	18	12	90	1.2
GL-G-95	21	13	95	1.5
GL-G-120	23	15	100	1.5
GL-G-150	25	16	105	1.8
GL-G-185	27	18	110	1.8
GL-G-240	30	20	120	1.8
GL-G-300	34	23	130	1.8
GL-G-400	38	26	140	2
GL-G-500	42	29	150	2.2
GL-G-630	54	34	170	4

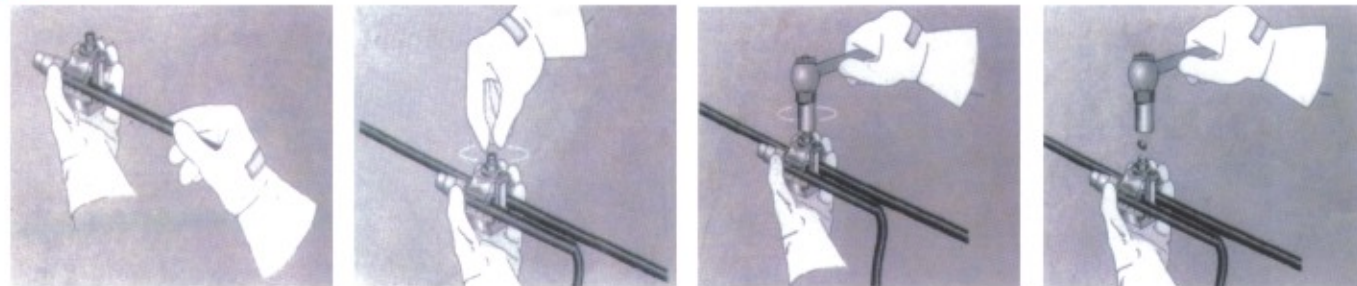
FJ6/HYJ 系列绝缘穿刺线夹 FJ6/HYJ Series insulation piercing connector(1KV)

■ 典型应用 Mainly application:

- 1、路灯系统专用(竖井禁用)
- 2、建筑照明、路灯、高层紧并线连接
- 3、高层建筑竖井电缆户外架空线、电缆沟工厂动力供电主缆
- 1、Special for street lamp system(vertical shaft forbidden)
- 2、For connecting the building lights,street lamp,high building vertical shaft
- 3、For connecting the cables of high building vertical shaft,outdoors overhead wire,cable trench,factory power cable.



■ 安装过程(单相线) Mounting process(single phase line) 用扳手或开口扳手(禁止使用手工钳)



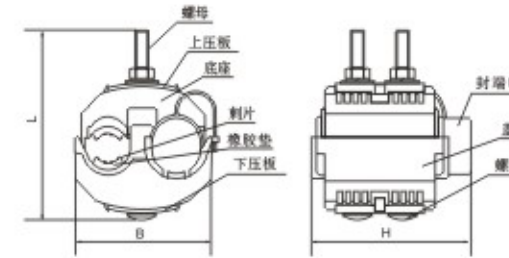
- 1.将断面整齐的支线插入分支器盖套
Insert branch line into the casing cover of connector
- 2.将分支器固定于主干线连接处，然后用力拧紧力矩螺母
Fix clamp on the joint of main line,then twist firmly by hand.
- 3.用六角套筒扳手垂直拧紧力矩螺母至螺帽断开为止
Vertically twist moment screw to break screw cap with hexagonal set spanner.
- 4.用六角套筒扳手垂直拧紧力矩螺母至螺帽断开为止
Vertically twist moment screw to break screw cap with hexagonal set spanner.

■ 安装剥面图析 Mounting digram instuttion



JJC 系列穿刺线夹(1kV/10kV)

JJC series punctured cord grip(1kV/10kV)



■ 产品特点 Products feature

- ◆ 穿刺结构，使用专用安装工具，确保穿刺压力，安装方便
- ◆ 结构密封，防腐蚀，使用寿命长
- ◆ 接触电阻小，线夹温升低
- ◆ 异径导线连接，适用范围广
- ◆ 绝缘性能优良，1kV耐电压大于4kV，10kV耐电压大于18kV
- ◆ puncture structure, torque nut, to insure the puncture pressure, and it's easy to fix.
- ◆ pressurized structure, corrosion protection, and have a longevity of service
- ◆ contact resistance is small, and the temperature of cord grip is low.
- ◆ it's connected with different pathway lead, and it's useful.
- ◆ insulating property is wonderful, 1kV withstand voltage is bigger than 4kV, 10kV withstand voltage is bigger than 18kV.

■ 规格及技术参数 Specification

适用电压 (kV)	型号 Catalog No	主导线规格 Main wire	支导线规格 Branch wire	螺栓数量 Number of bolts	扭矩值	主要尺寸 Dimensions(mm)		
						H	B	L
1KV	JJC1.5~25/1.5~10	1.5~25	1.5~10	1	13	45	27	60
	JJC16~70/4~15	16~70	4~25	1	25	52	52	85
	JJC16~70/16~70	16~70	16~70	1	25	52	52	85
	JJC16~95/4~35	16~95	4~35	1	25	60	45	85
	JJC25~95/25~95	25~95	25~95	2	25	65	56	85
	JJC50~120/16~50	50~120	16~50	1	25	56	54	85
	JJC50~120/50~120	50~120	50~120	1	25	60	54	85
	JJC50~150/6~35	50~150	6~35	1	25	60	45	85
	JJC50~150/50~150	50~150	50~150	2	25	67	58	95
	JJC95~240/95~240	95~240	95~240	2	25	77	67	95
	JJC120~240/25~120	120~240	25~120	2	25	67	63	95
JJC120~240/70~120	120~240	70~120	2	25	78	60	95	
JJC120~240/120~240	120~240	120~240	2	25	80	64	95	
10KV	JJC10-0	10~25	10~25	2	30	95	73	115
	JJC10-1	25~50	25~50	2	30	95	73	115
	JJC10-2	70~120	25~50	2	30	95	78	115
	JJC10-3	70~120	70~120	2	30	95	78	115
	JJC10-4	150~240	70~120	2	30	95	89	115
	JJC10-5	150~240	150~240	2	30	95	86	115
JJC10-6	150~240	25~50	2	30	95	86	115	

穿刺接地线夹

■ 用途 Application:

- 1、用于架空绝缘线路中电力线路的接地装置。
- 2、性能特点: a.结构简单, 安装方便(无需剥皮安装);
b.接地可靠;
c.绝缘性能好。



■ 规格及技术参数 Specification

产品名称 Name	型号 Type	适用导线规格 Conductor(mm ²)
穿刺接地线夹	JJCD-35~120(1kV)	1kVJKLYJ35~120
	JJCD-150~240(1kV)	1kVJKLYJ150~240
	JJCD-50~120(10kV)	10kVJKLYJ50~120
	JJCD-150~240(10kV)	10kVJKLYJ150~240
	JJCD-35~120(20kV)	20kVJKLYJ35~120
	JJCD-50~240(20kV)	20kVJKLYJ150~240

JJCB 变压器接地线夹(10kV)

■ 用途 Application:

适用于 10kV 架空绝缘导线配电网中配电变压器高压引线和户外高压跌落式熔断器下端的接续。

当高压跌落式熔断器与电源断开, 用接地棒挂入接地环下端, 起变压器高压线圈放电作用。

It is applicable for the connection between high voltage lead of distribution transformer and the lower side of outdoor high voltage falling type fuse.

When disconnected with power supply ,high voltage falling type fuse will be hung at the lower side of ground ring via ground rod., performing discharge function of high voltage coil of transformer.

■ 安装过程: Fixing process

- 1、不同型号的熔断器连接不同角度的铜连接板。
 - 2、把穿刺型变压器接地线夹的连接端子, 正确连接在 10kV 级户外高压跌落式熔断器下端。
 - 3、将配电器上高压导线通过穿刺接地线夹主线位置后, 用护线套盖好绝缘导线的端部。
- 1、Connect fuse of different types to copper interconnect at different angles.
 - 2、Correctly connect the terminal of puncture type transformer ground clamp to the lower side of outdoor high voltage falling type fuse 10kV.
 - 3、Thread the high voltage lead of distribution transformer through the main line position of puncture wire clamp.And cover the of insulated conductor with wire protective shield.

■ 特点

安装简单, 方便实用。

Simple installation and convenient using

结构密封, 防腐蚀、防潮、防水、防老化。产品外部紧包绝缘硅橡胶, 保证其足够绝缘强度。

Sealed structure and resistance to corrosion, dampness, water and aging.

The product is enclosed with insulated silicon rubber, ensuring enough insulation strength.:



型号 Catalog	适用导线规格 Applicable bus(mm ²)	备注 Note
JJCB-25~50(10kV)	20-50	配 JBC10-2 穿刺线夹
JJCB-70~120(10kV)	70-120	配 JBC10-3 穿刺线夹

验电接地环装置

Electric-check earthing ring device

■ 用途 Application:

- 1、用于架空绝缘线路中电力线路的接地装置。
- 2、性能特点: a.结构简单, 安装方便(无需剥皮安装);
b.接地可靠;
c.绝缘性能好。

■ 规格及技术参数 Specification

型号 Catalog No.	产品组合型号		适用导线规格 Conductor (mm ²)
	产品型号	接地环	
BYD-35~120/2	JBL-35~120(2 节)	铝环	35~120/10kV
BYD-35~120/3	JBL-35~120(3 节)		35~120/10kV
BYD-50~240/2	JBL-50~240(2 节)		50~240/10kV
BYD-50~240/2 号加长	JBL-50~240(2 节号加长)		50~240/10kV
BYD-50~240/3	JBL-50~240(3 节)		50~240/10kV
BYD-120~400/2	JBL-120~400(2 节)		120~400/10kV
BYD-120~400/3	JBL-120~400(3 节)		120~400/10kV
BYD-50~240/2(20kV)	JBL-50~240(2 节)		50~240/20kV
BYD-50~240/3(20kV)	JBL-50~240(3 节)		50~240/20kV
BYDT-35~120/2	JBL-35~120(2 节)		铜环
BYDT-35~120/3	JBL-35~120(3 节)	35~120/10kV	
BYDT-50~240/2	JBL-50~240(2 节)	50~240/10kV	



JDL 型接地线夹及绝缘罩

JDL earthing clamp and insulation cover

■ 用途 Application

适用于 10kV 及以下架空绝缘线路中的接地连接和高压线路放电连接，与绝缘罩配套使用，起绝缘防护作用。

It is suitable for discharge connection of earthing connection and high-voltage wire of overhead insulation wire, insulation cover are used together. Its action is insulation protection 10kV or below.

■ 性能特点 Performance

- ◆ 夹体采用高强度铝合金制造，质量轻
- ◆ 施工方便，接地安全可靠
- ◆ 可适用多种规格导线
- ◆ 绝缘罩采用硅橡胶制造而成，绝缘性能好，交流耐压 $\geq 18kV$
- ◆ The clamp is made of high-intensity aluminium alloy.
- ◆ Easy construction, safety and reliable earthing.
- ◆ Suitable for kinds specification conductor.
- ◆ The insulation cover is made of silicon rubber, good insulation, withstand voltage $\geq 18kV$



■ 规格及技术参数 Specification

型号 Catalog No.	适用导线规格 Main specification	配套绝缘罩规格 Insulation cover	适用电压等级 Applied voltage level
JDL-50-240A	50-240mm ²	JDL-50-240A	10kV
JDL-50-240B	50-240mm ²	JDL-50-240A	10kV
JDL-50-240C	50-240mm ²	JDL-50-240A	10kV
JDL-50-240D	50-240mm ²	JDL-50-240D	10kV
JDL-50-240E	50-240mm ²	整体式红黄绿三色	10kV
JDL-50-240F	50-240mm ²	JDL-50-240F	20kV

防雷验电穿刺接地线夹(FDL)

Examine the electrical ground lightning puncture ring(FDL)

■ 用途

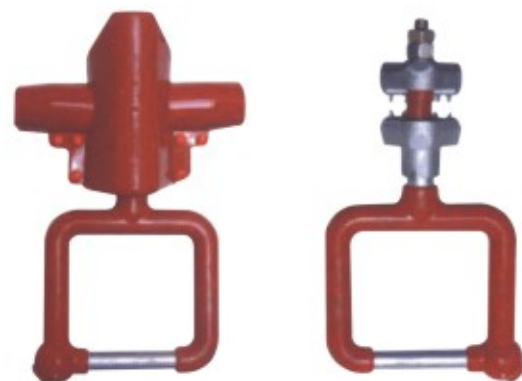
防止架空绝缘导线雷击断线，以及用于检修施工时的验电和临时接地的保护装置，适用于铜、铝架空绝缘导线。

■ 规格范围

型号规格	导线截面范围(mm ²)
FDL-(50-240)	50-240

■ 性能参数

- 1、雷电全波冲击耐受电压(峰值)KV: 100
- 2、1min工频耐受电压(有效值)KV: 50
- 3、工频电弧电流(有效值)KA: 12.5
- 4、穿刺部位涂有独特的防水绝缘膏



FHJ 型防雷金具

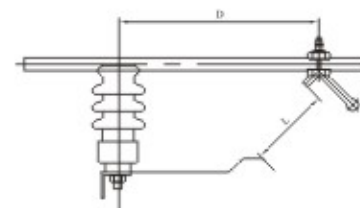
Model FHJ Lightning Protection Anchor Clamp

■ 产品结构 Product structure

穿刺型防雷金具，由穿刺电极、接地电极和绝缘罩三部分组成，用于 10kV、20kV 的绝缘导线雷击断线的保护。

The piercing type lightning protection anchor clamp is composed of piercing electrode, grounding electrode and insulation shield, for protection against lightning-caused breakage of 10kV、20kV insulated conductor.

■ 规格及技术参数 Specification



型号	适用导线规格 Main specification	适用导线范围 (mm ²)	图片	备注
FHJ-25-120A	JKLYJ10kV	25-120		
FHJ-150-240A	JKLYJ10kV	150-240		
FHJ-25-120B (20kv)	JKLYL20kV	25-120		
FHJ-150-240B (20kv)	JKLYJ20kV	150-240		
FHJ-25-120C	JKLYJ10kV	70-120		
FHJ-150-240C	JKLYJ10kV	150-240		
FDL-25-120D	JKLYJ10kV	25-120		
FDL-150-240D	JKLYJ10kV	150-240		

■ 适用绝缘子及安装参数表(10kV)

绝缘子型号	P15	P20	PS15/300	PS15/300
对应的距离 D(mm)	260 ± 10	260 ± 10	260 ± 10	260 ± 10
对应的距离 L(mm)	130 ± 10	160 ± 10	160 ± 10	160 ± 10

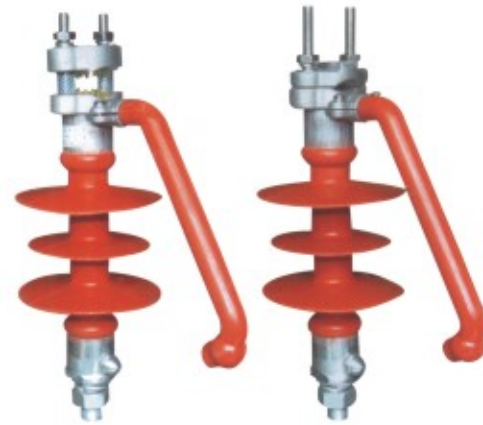
■ 适用绝缘子及安装参数表(20kV)

绝缘子型号	PS-150/12.5Z	PS-170/12.5ZS	FPS170/12.5	FPQ4-20/12.5
对应的距离 D(mm)	320 ± 10	320 ± 10	320 ± 10	320 ± 10
对应的距离 L(mm)	180 ± 20	200 ± 20	200 ± 20	180 ± 20

穿刺式(非穿刺式)防弧绝缘子

Puncture type (non puncture type) Prevent arc insulator

FHJ-12/5T20穿刺式(非穿刺式)防弧绝缘子是一种新型组合式结构的产品。国内外现在配电线路上广泛地应用了绝缘导线,但是绝缘导线先天不足的耐雷水平,在遭受雷击时,容易发生断线事故。本产品是新型组合式结构的二合一穿刺式防弧绝缘子,其复合绝缘子有很好的绝缘性能和防污秽水平,可适和于10KV架空电力线路中绝缘和支持导线用,而且还具有防止10KV架空绝缘导线雷击断线保护功能。本产品还具有为防止导线因热胀冷缩而移动的移动压块和穿刺式的刺齿构造,安装施工方便可靠,不需剥开绝缘层,可避免线芯进水和腐蚀。



规格及技术参数 Specification

型号 Type	绝缘导线 截面(mm ²)	额定 电压	额定弯曲 耐受负荷KN	结构高度 (mm)	绝缘距离 (mm)	最小公称爬 电距离mm	雷电全波冲击耐 受电压(峰值)KV	1min工频耐受 电压(有效值)KV	备注
FHJ-12/5T20	70/240	12	5	255	160	380	75	40	穿刺式
FHJ-12/5T20	70/240	12	5	255	160	380	75	40	非穿刺式
FHJ-20/5T20	70/240	20	5	380	286	700	160	95	穿刺式
FHJ-20/5T20	70/240	20	5	380	286	700	160	95	非穿刺式

防弧穿刺线夹

Anti-arc piercing(CFH)

用途

防止架空绝缘导线雷击断线的保护装置,适用于铜、铝架空绝缘导线。

规格范围

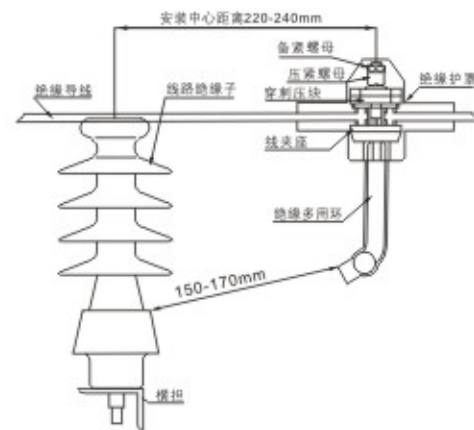
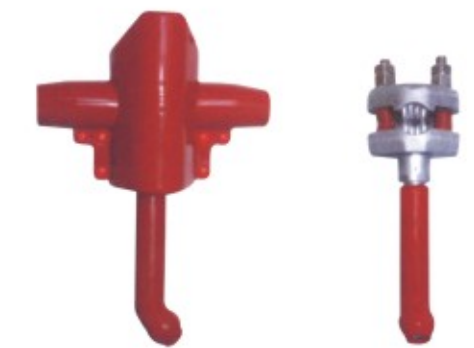
型号规格	导线截面范围(mm ²)
CFH-50-240	50-240

性能参数

- 雷电全波冲击耐受电压(峰值)KV: 100
- 1min工频耐受电压(有效值)KV: 50
- 工频电弧电流(有效值)KA: 12.5
- 穿刺部位涂有独特的防水绝缘膏

安装示意图(如CFH)

本产品安装在绝缘子线路的负荷侧,用扭力扳手交替、对称拧紧螺母,这时,导线的外层应紧靠线槽底部,穿刺齿应刺穿导线的绝缘层与导线的内部导电层紧密连接,并在线夹座外部安装绝缘护罩,用固定扣固定绝缘护罩,安装距离尺寸见以上安装示意图。



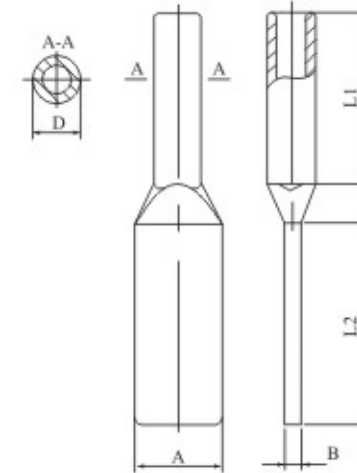
安装示意图(如CFH)

压缩型铝设备线夹

Compression Terminal Clamp Al Terminal Clamp(Compression Type)

1) 铝设备线夹(压缩型A型)

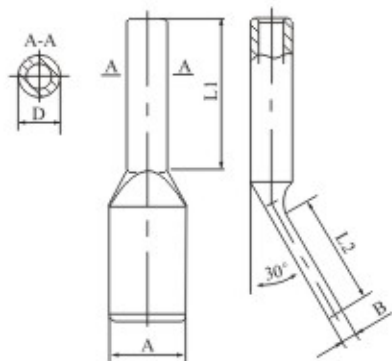
Aluminium terminal connectors (compression type A)



型号 Catalog No.	适用导线 Suitable Conductor(mm ²)		主要尺寸 Dimensions(mm)					重量 Weight (kg)	
	型号 Catalog No.	外径(mm)	A	B	D	L ₁	L ₂		
SY-35/6A	LGJ-35/6	8.16	30	8	16	60	60	0.1	
SY-50/8A	LGJ-50/8	9.60	30	8	18	60	60	0.1	
SY-70/10A	LGJ-70/10	11.40	40	8	22	70	60	0.1	
SY-95/15A	LGJ-95/15	13.61	40	10	26	80	60	0.2	
SY-120/7A	LGJ-120/7	14.50	50	10	26	80	80	0.2	
SY-120/20A	LGJ-120/20	15.07							
SY-150/8A	LGJ-150/8	16.00	50	10	30	90	80	0.3	
SY-150/20A	LGJ-150/20	16.67							
SY-185/10A	LGJ-185/10	18.00	50	12	32	90	80	0.3	
SY-185/25~30A	LGJ-185/25	18.90							
		LGJ-185/30	18.88						
SY-210/10A	LGJ-210/10	19.00	50	12	34	100	80	0.4	
SY-210/25A	LGJ-210/25	19.98							
SY-240/30~40A	LGJ-240/30	21.60	50	12	36	100	80	0.5	
		LGJ-240/40							21.66
SY-300/15A	LGJ-300/15	23.01	63	16	40	110	100	0.6	
SY-300/20A	LGJ-300/20	23.43							
SY-300/25~40A	LGJ-300/25	23.76	63	16	45	120	100	0.7	
		LGJ-300/40							23.94
SY-400/20~35A	LGJ-400/20	26.91	63	16	45	120	100	0.7	
		LGJ-400/25							26.64
		LGJ-400/35							26.82
SY-400/50~65A	LGJ-400/50	27.63	63	16	45	120	100	0.7	
		LGJ-400/65							28.00
SY-500/35~45A	LGJ-500/35	30.00	80	16	52	130	100	1.0	
		LGJ-500/45							30.00
SY-500/65A	LGJ-500/65	30.96	100	20	60	150	100	1.2	
SY-630/45A	LGJ-630/45	33.60							
SY-630/55A	LGJ-630/55	34.32	125	22	65	170	125	2.1	
SY-800/55A	LGJ-800/55	38.40							
SY-800/70~100A	LGJ-800/70	38.58	125	22	65	170	125	2.1	
		LGJ-800/100							38.98

2) 铝设备线夹(压缩型 30°)

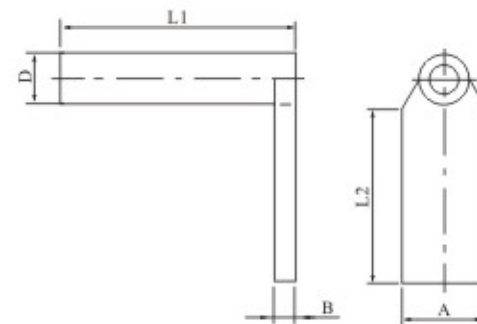
Aluminium terminal connectors (compression 30°)



型号 Catalog No.	适用导线 Suitable Conductor(mm ²)		主要尺寸 Dimensions(mm)					重量 Weight (kg)
	型号 Catalog No.	外径(mm)	A	B	D	L ₁	L ₂	
SY-35/6B	LGJ-35/6	8.16	30	8	16	60	60	0.1
SY-50/8B	LGJ-50/8	9.60	30	8	18	60	60	0.1
SY-70/10B	LGJ-70/10	11.40	40	8	22	70	60	0.1
SY-95/15B	LGJ-95/15	13.61	40	10	26	80	60	0.2
SY-120/7B	LGJ-120/7	14.50	50	10	26	80	80	0.2
SY-120/20B	LGJ-120/20	15.07						
SY-150/8B	LGJ-150/8	16.00	50	10	30	90	80	0.3
SY-150/20B	LGJ-150/20	16.67						
SY-185/10B	LGJ-185/10	18.00	50	12	32	90	80	0.3
SY-185/25~30B	LGJ-185/25	18.90						
	LGJ-185/30	18.88						
SY-210/10B	LGJ-210/10	19.00	50	12	34	100	80	0.3
SY-210/25B	LGJ-210/25	19.98						
SY-240/30~40B	LGJ-240/30	21.60	50	12	36	100	80	0.4
	LGJ-240/40	21.66						
SY-300/15B	LGJ-300/15	23.01	63	16	40	110	100	0.7
SY-300/20B	LGJ-300/20	23.43						
SY-300/25~40B	LGJ-300/25	23.76						
	LGJ-300/40	23.94						
SY-400/20~35B	LGJ-400/20	26.91	63	16	45	120	100	0.7
	LGJ-400/25	26.64						
	LGJ-400/35	26.82						
SY-400/50~65B	LGJ-400/50	27.63	80	16	52	130	100	0.9
	LGJ-400/65	28.00						
SY-500/35~45B	LGJ-500/35	30.00	80	16	52	130	100	0.9
	LGJ-500/45	30.00						
SY-500/65B	LGJ-500/65	30.96	100	20	60	150	100	1.5
SY-630/45B	LGJ-630/45	33.60						
SY-630/55B	LGJ-630/55	34.32						
SY-800/55B	LGJ-800/55	38.40						
SY-800/70~100B	LGJ-800/70	38.58	125	22	65	170	125	2.1
	LGJ-800/100	38.98						

3) 铝设备线夹(压缩型 90°)

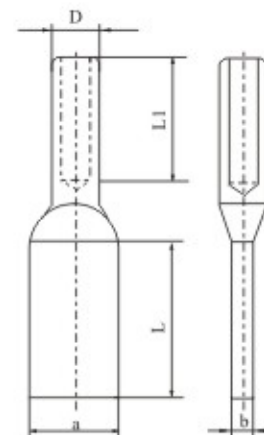
Aluminium terminal connectors (compression 90°)



型号 Catalog No.	适用导线 Suitable Conductor(mm ²)		主要尺寸 Dimensions(mm)					重量 Weight (kg)
	型号 Type	外径 mm	A	B	D	L ₁	L ₂	
SY-120/7C	LGJ-120/7	14.50	50	10	26	115	80	0.3
SY-120/20C	LGJ-120/20	15.07						
SY-150/8C	LGJ-150/8	16.00	50	10	30	125	80	0.4
SY-150/20C	LGJ-150/20	16.67						
SY-185/10C	LGJ-185/10	18.00	50	12	32	125	80	0.5
SY-185/25~30C	LGJ-185/25	18.90						
	LGJ-185/30	18.88						
SY-210/10C	LGJ-210/10	19.00	50	12	34	135	80	0.6
SY-210/25C	LGJ-210/25	19.98						
SY-240/30~40C	LGJ-240/30	21.60	50	12	36	135	80	0.7
	LGJ-240/40	21.66						
SY-300/15C	LGJ-300/15	23.01	63	16	40	145	100	0.7
SY-300/20C	LGJ-300/20	23.43						
SY-300/25~40C	LGJ-300/25	23.76						
	LGJ-300/40	23.94						
SY-400/20~35C	LGJ-400/20	26.91	63	16	45	155	100	0.8
	LGJ-400/25	26.64						
	LGJ-400/35	26.82						
SY-500/35~45C	LGJ-500/35	30.00	80	16	52	165	100	1.0
	LGJ-500/45	30.00						
SY-630/45C	LGJ-630/45	33.60	100	20	60	185	100	1.7
SY-630/55C	LGJ-630/55	34.32						
SY-800/55C	LGJ-800/55	38.40	125	22	65	210	125	2.5
SY-800/70~100C	LGJ-800/70	38.58						
	LGJ-800/100	38.98						

耐热导线设备线夹(SY型A类)

Terminal Connectors for Heat-resistant Conductor(Type SY, Group A)

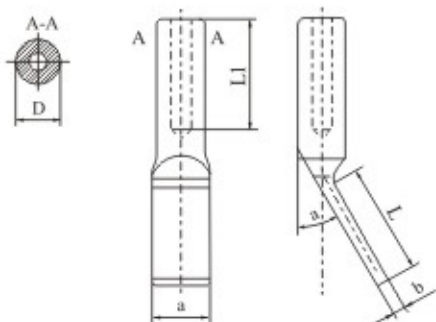


型号 Catalog No.	适用导线 Suitable Conductor(mm ²)	主要尺寸 Dimensions(mm)					参考重量 Weight (kg)
		a	b	D	L ₁	L	
SY-210/10NA	NRLH 铝GJ-210/10	63	16	45	120	100	0.8
SY-240/30NA	NRLH 铝GJ-240/30	65	16	45	150	100	1.0
SY-300/50NA	NRLH 铝GJ-300/50	100	20	50	170	100	1.5
SY-400/50NA	NRLH 铝GJ-400/50	100	20	55	180	120	1.6
SY-500/35NA	NRLH 铝GJ-500/35	120	22	60	180	130	2.0
SY-500/65NA	NRLH 铝GJ-600/65	125	22	60	180	130	2.0
SY-630/45NA	NRLH 铝GJ-630/45	125	22	70	200	130	3.2
SY-630/80NA	NRLH 铝GJ-630/80	125	22	70	200	130	3.2
SY-800/55NA	NRLH 铝GJ-800/55	125	22	72	200	160	4.5

尺寸 a 和 L 如有变化, 请用户在订货时注明 L × a 值, 如 SY-400/35NA(L × a)。
If the dimensions of "a" and "L" have changed, please indicate the value of L × a when place the order. For example: SY-400/35NA(L × a).

耐热导线设备线夹(SY 型 B 类)

Terminal Connectors for Heat-resistant Conductor(Type SY, Group B)

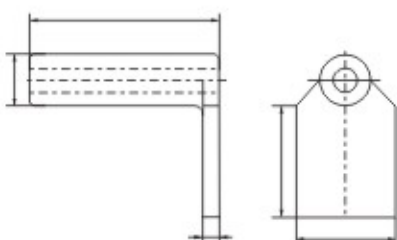


型号 Catalog No.	适用导线 Suitable Conductor(mm ²)	主要尺寸 Dimensions(mm)					参考重量 Weight (kg)	
		a	b	D	L ₁	L		
SY-210/10NB	NRLH 铝GJ-210/10	63	16	45	120	105	30°	1.4
SY-300/50NB	NRLH 铝GJ-300/50	100	20	50	170	105	30°	1.5
SY-400/50NB	NRLH 铝GJ-400/50	100	20	55	180	105	30°	1.6
SY-400/50NB	NRLH 铝GJ-400/50	100	20	55	180	105	30°	1.6
SY-500/35NB	NRLH 铝GJ-500/35	120	22	60	180	135	30°	2.0
SY-500/65NB	NRLH 铝GJ-600/65	120	22	60	180	135	30°	2.0
SY-630/45NB	NRLH 铝GJ-630/45	125	22	70	200	135	30°	3.2
SY-630/80NB	NRLH 铝GJ-630/80	125	22	70	200	135	30°	3.2

尺寸 a 和 L 如有变化，请用户在订货时注明 L × a 值，如 SY-400/35NA(L × a)。
It the dimensions of "a" and "L" have changed, please indicate the value of L × a when place the order. For example: SY-400/35NA(L × a).

耐热导线设备线夹(SY 型 C 类)

Terminal Connectors for Heat-resistant Conductor(Type SY, Group C)

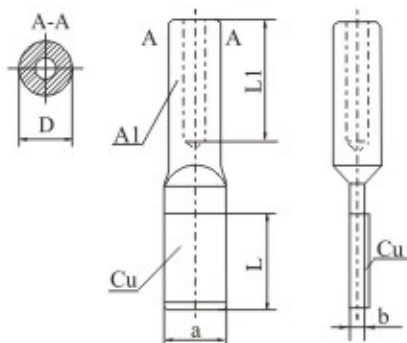


型号 Catalog No.	适用导线 Suitable Conductor(mm ²)	主要尺寸 Dimensions(mm)					参考重量 Weight (kg)
		a	b	D	L ₁	L	
SY-210/10NC	NRLH 铝GJ-210/10	63	16	45	150	105	1.8
SY-300/50NC	NRLH 铝GJ-300/50	100	18	50	200	105	1.8
SY-400/50NC	NRLH 铝GJ-400/50	100	20	55	200	120	2.0
SY-500/35NC	NRLH 铝GJ-500/35	125	22	60	240	130	2.2
SY-500/65NC	NRLH 铝GJ-500/65	125	22	60	240	130	2.2
SY-630/45NC	NRLH 铝GJ-630/45	125	22	70	250	135	3.4
SY-630/80NC	NRLH 铝GJ-630/80	125	22	70	250	135	3.4

尺寸 a 和 L 如有变化，请用户在订货时注明 L × a 值，如 SY-400/35NC(L × a)。
It the dimensions of "a" and "L" have changed, please indicate the value of L × a when place the order. For example: SY-400/35NC(L × a).

耐热导线铜铝过渡设备线夹(SYG 型 A 类)

Al-Cu Transition Connectors for heat-resistant Conductor(Type SYG, Group A)

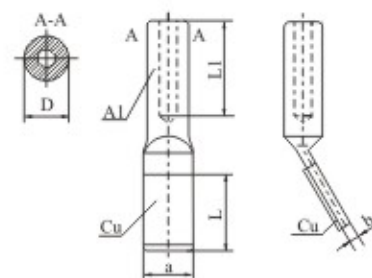


型号 Catalog No.	适用导线 Suitable Conductor(mm ²)	主要尺寸 Dimensions(mm)					参考重量 Weight (kg)
		a	b	D	L ₁	L	
SYG-210/10NA	NRLH 铝GJ-210/10	63	16	45	120	105	
SYG-300/50NA	NRLH 铝GJ-300/50	100	20	50	170	110	
SYG-400/50NA	NRLH 铝GJ-400/50	100	20	55	200	120	
SYG-500/35NA	NRLH 铝GJ-500/35	125	22	60	220	120	
SYG-500/65NA	NRLH 铝GJ-500/65	125	22	60	220	120	
SYG-630/45NA	NRLH 铝GJ-630/45	125	22	70	240	130	
SYG-630/80NA	NRLH 铝GJ-630/80	125	22	70	240	130	

尺寸 a 和 L 如有变化，请用户在订货时注明 L × a 值，如 SY-400/35NA(L × a)。采用覆铜搪锡工艺产品型号添加“Q”例如 SYG-400/50NAQ。
It the dimensions of "a" and "L" have changed, please indicate the value of L × a when place the order. For example: SY-400/35NA(L × a).

耐热导线铜铝过渡设备线夹(SYG 型 B 类)

Al-Cu Transition Connectors for heat-resistant Conductor(Type SYG, Group A)

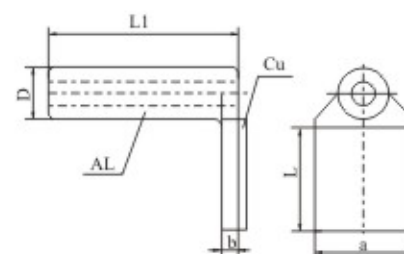


型号 Catalog No.	适用导线 Suitable Conductor(mm ²)	主要尺寸 Dimensions(mm)					参考重量 Weight (kg)
		a	b	D	L ₁	L	
SYG-210/10NB	NRLH 铝GJ-210/10	63	16	45	120	105	1.4
SYG-300/50NB	NRLH 铝GJ-300/50	100	18	50	170	110	1.5
SYG-400/50NB	NRLH 铝GJ-400/50	100	20	55	200	120	1.6
SYG-500/35NB	NRLH 铝GJ-500/35	125	22	60	220	120	2.0
SYG-500/65NB	NRLH 铝GJ-500/65	125	22	60	220	120	2.0
SYG-630/45NB	NRLH 铝GJ-630/45	125	22	70	240	130	3.2
SYG-630/80NB	NRLH 铝GJ-630/80	125	22	70	240	130	3.2

尺寸 a 和 L 如有变化，请用户在订货时注明 L × a 值，如 SY-400/35NB(L × a)。采用覆铜搪锡工艺产品型号添加“Q”例如 SYG-400/50NBQ。
It the dimensions of "a" and "L" have changed, please indicate the value of L × a when place the order. For example: SY-400/35NB(L × a).

耐热导线铜铝过渡设备线夹(SYG 型 C 类)

Al-Cu Transition Connectors for heat-resistant Conductor(Type SYG, Group C)

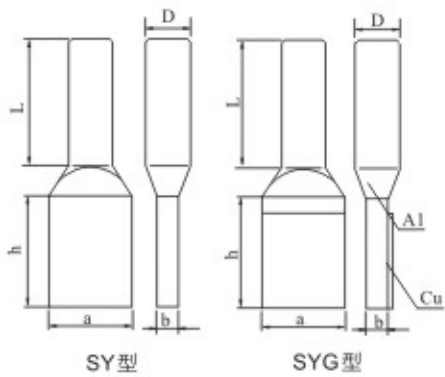


型号 Catalog No.	适用导线 Suitable Conductor(mm ²)	主要尺寸 Dimensions(mm)					参考重量 Weight (kg)
		a	b	D	L ₁	L	
SYG-210/10NC	NRLH 铝GJ-210/10	63	16	45	150	105	1.8
SYG-300/50NC	NRLH 铝GJ-300/50	100	18	50	200	110	1.8
SYG-400/50NC	NRLH 铝GJ-400/50	100	20	55	220	110	2.0
SYG-500/35NC	NRLH 铝GJ-500/35	125	22	60	240	125	2.2
SYG-500/65NC	NRLH 铝GJ-500/65	125	22	60	240	125	2.2
SYG-630/45NC	NRLH 铝GJ-630/45	125	22	70	250	135	3.4
SYG-630/80NC	NRLH 铝GJ-630/80	125	22	70	250	135	3.4

尺寸 a 和 L 如有变化，请用户在订货时注明 L × a 值，如 SY-400/35NB(L × a)。采用覆铜搪锡工艺产品型号添加“Q”例如 SYG-400/50NBQ。
It the dimensions of "a" and "L" have changed, please indicate the value of L × a when place the order. For example: SY-400/35NB(L × a).

单导线设备线夹(0° SY、SYG 压缩型)

Terminal Clamps For Single-Conductor of Compression Type(Type SY、SYG)

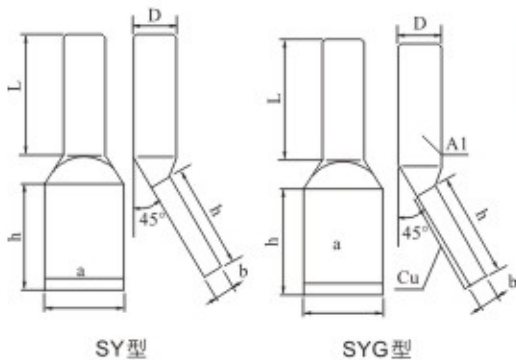


型号 Catalog No.	适用导线外径 Conductor Dia (mm)	主要尺寸 Dimensions(mm)			参考重量 Weight (kg)
		b	D	L	
SY/SYG-1000NA(h × a)	42.08	20	70	220	
SY/SYG-900KA(h × a)	49.00	20	74	200	
SY/SYG-1400A(h × a)	51.00	22	76	200	
SY/SYG-1440NA(h × a)	51.36	24	80	240	
SY/SYG-1400KA(h × a)	57.00	24	84	260	

注: 1.SY 型为铝线夹; SYG 型为铜铝过渡线夹, 其型号命名为: SYG-XXXXA(hXa), 其尺寸与 SY 型完全相同;
2.尺寸 h、a (长、宽) 请用户自定, 例如: SY-1000NA(hXa).
Note: 1.the kind of SY is aluminium cord grip, the kind of SYG is copper and aluminium transition cord grip, this kind is named as: SYG-XXXXA(hXa), the dimension is the same as the kind of SY.
2.Dimension: length and wideness are decided by consumers, for example: SY-1000NA(hXa).

单导线设备线夹(45° SY、SYG 压缩型)

Terminal Clamps For Single-Conductor of Compression Type(Type SY、SYG)

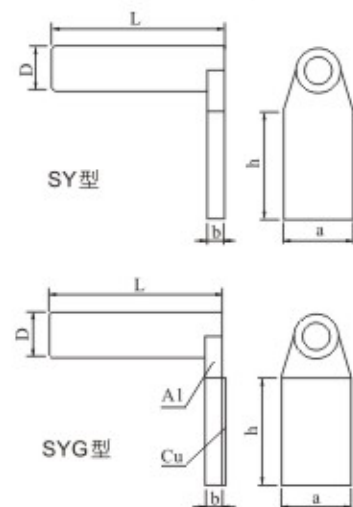


型号 Catalog No.	适用导线外径 Conductor Dia (mm)	主要尺寸 Dimensions(mm)			参考重量 Weight (kg)
		b	D	L	
SY/SYG-1000NB(h × a)	42.08	20	70	220	
SY/SYG-900KB(h × a)	49.00	20	74	200	
SY/SYG-1400B(h × a)	51.00	22	76	200	
SY/SYG-1440NB(h × a)	51.36	24	80	240	
SY/SYG-1400KB(h × a)	57.00	24	84	260	

注: 1.SY 型为铝线夹; SYG 型为铜铝过渡线夹, 其型号命名为: SYG-XXXXA(hXa), 其尺寸与 SY 型完全相同;
2.尺寸 h、a (长、宽) 请用户自定, 例如: SY-1000NB(hXa).
Note: 1.the kind of SY is aluminium cord grip, the kind of SYG is copper and aluminium transition cord grip, this kind is named as: SYG-XXXXA(hXa), the dimension is the same as the kind of SY.
2.Dimension: length and wideness are decided by consumers, for example: SY-1000NB(hXa).

单导线设备线夹(90° SY、SYG 压缩型)

Terminal Clamps For Single-Conductor of Compression Type(Type SY、SYG)

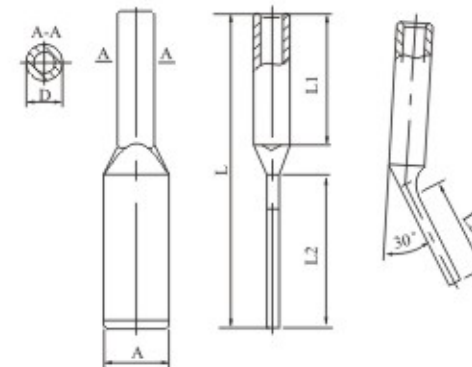


型号 Catalog No.	适用导线外径 Conductor Dia (mm)	主要尺寸 Dimensions(mm)			参考重量 Weight (kg)
		b	D	L	
SY/SYG-1000NC(h × a)	42.08	20	70	265	
SY/SYG-900KC(h × a)	49.00	20	74	225	
SY/SYG-1400C(h × a)	51.00	22	76	225	
SY/SYG-1440NC(h × a)	51.36	24	80	285	
SY/SYG-1400KC(h × a)	57.00	24	84	260	

注: 1.SY 型为铝线夹; SYG 型为铜铝过渡线夹, 其型号命名为: SYG-XXXXA(hXa), 其尺寸与 SY 型完全相同;
2.尺寸 h、a (长、宽) 请用户自定, 例如: SY-1000NC(hXa).
Note: 1.the kind of SY is aluminium cord grip, the kind of SYG is copper and aluminium transition cord grip, this kind is named as: SYG-XXXXA(hXa), the dimension is the same as the kind of SY.
2.Dimension: length and wideness are decided by consumers, for example: SY-1000NC(hXa).

压缩型铜设备线夹(A、B 类)

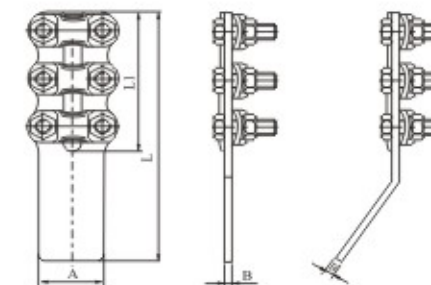
Compression Copper terminal connector (type A、B)



型号 Catalog No.	主要尺寸 Dimensions(mm)				
	D	A	L	L ₁	L ₂
SYT-95	20	40	150	60	70
SYT-120	22	40	160	65	70
SYT-150	25	50	170	70	75
SYT-185	27	50	180	75	80
SYT-240	30	50	190	80	85
SYT-300	32	60	210	90	90
SYT-400	36	60	220	90	100
SYT-500	40	80	230	100	100
SYT-630	45	80	235	100	100
SYT-800	50	100	270	110	120

铝设备线夹

Aluminium terminal connector



1) 铝设备线夹(七四定型)

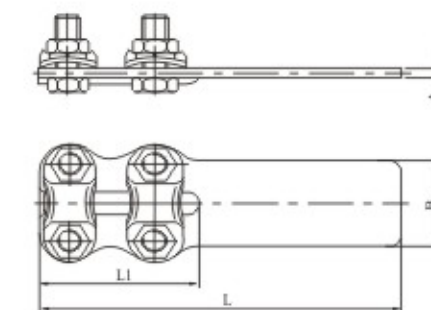
Aluminium terminal connector(74 Catalog)

型号 Catalog No.	适用导线 Conductor(mm ²)	螺栓个数 Number of bolt	主要尺寸 Dimensions(mm)			
			A	B	L ₁	L
SL-1A/1B	35~50	4	40	6	65	145
SL-2A/2B	70~95	4	40	6	80	175
SL-3A/3B	120~150	6	50	8	125	225
SL-4A/4B	185~240	6	50	8	125	225

线夹本体为铝制件, 其余为热镀锌钢制件 注: * (八五国标) (85 catalog)
The clamp body is aluminium, the other parts are hot-dip galvanized steel

2) 铝设备线夹(七四定型)

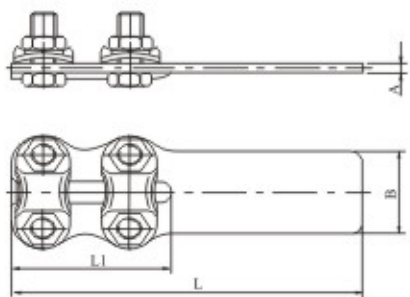
Aluminium terminal connector(74 Catalog)



型号 Catalog No.	适用导线 Conductor(mm ²)	主要尺寸 Dimensions(mm)			
		B	A	L ₁	L
SL-1(单孔)single hole	35~50	40	6	65	120
SL-2(单孔)single hole	70~95	40	6	80	136
SL-3(双孔)double holes	35~50	40	6	65	145
SL-4(双孔)double holes	70~95	40	6	80	175
SL-5(双孔)double holes	120~150	50	8	125	225
SL-6(双孔)double holes	185~240	50	8	125	225
SL-7(四孔)four holes	120~150	80	8	125	239
SL-8(四孔)four holes	185~240	80	8	125	239

铜设备线夹

Copper terminal connector



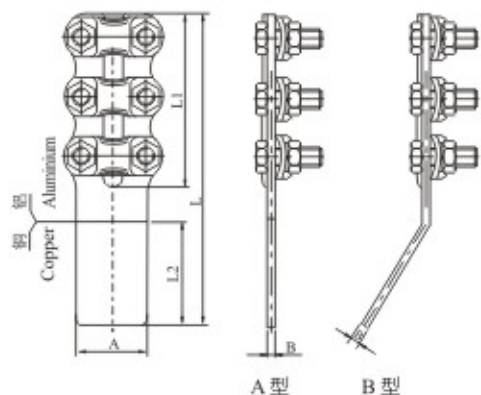
1) 铜设备线夹(七四定型)

Copper terminal connector(74 Catalog)

型号 Catalog No.	适用导线 Conductor(mm ²)	主要尺寸 Dimensions(mm)			
		B	A	L ₁	L
ST-1(单孔)single hole	35~50	40	4.5	65	120
ST-2(单孔)single hole	70~95	40	4.5	80	136
ST-3(双孔)double holes	35~50	40	4.5	65	145
ST-4(双孔)double holes	70~95	40	4.5	80	175
ST-5(双孔) double holes	120~150	50	5.3	125	225
ST-6(双孔) double holes	185~240	50	5.3	125	225
ST-7(四孔) four holes	120~150	80	5.5	125	239
ST-8(四孔)four holes	185~240	80	5.5	125	239

铜铝过渡设备线夹

Cu-Al transition terminal connector



1) 铜铝过渡设备线夹(七四定型)

Cu-Al transition terminal connector(74 Catalog)

型号 Catalog No.	适用导线 Conductor(mm ²)	主要尺寸 Dimensions(mm)				
		A	B	L ₁	L ₂	L
SL-1(单孔)(single hole)	35~50	40	5	65	42	120
SL-2(单孔)(single hole)	70~95	40	5	80	45	136
SL-3(双孔)(double holes)	35~50	40	5	65	65	145
SL-4(双孔)(double holes)	70~95	40	5	80	80	175
SL-5(双孔)(double holes)	120~150	50	6	125	85	225
SL-6(双孔)(double holes)	185~240	50	6	125	85	225
SL-7(四孔)(four holes)	120~150	80	6	125	85	239
SL-8(四孔)(four holes)	185~240	80	6	125	85	239

2) 铜铝过渡设备线夹(八五国标)

Cu-Al transition terminal connector(85 Catalog)

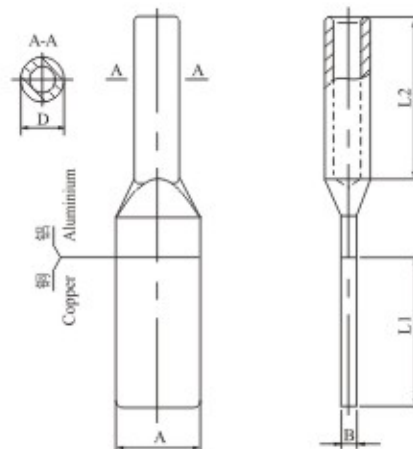
型号 Catalog No.	适用导线 Conductor(mm ²)	螺栓个数 Number of bolt	主要尺寸 Dimensions(mm)				
			A	B	L	L ₁	L ₂
SLG-1A/1B	35~50	4	40	5	145	65	65
SLG-2A/2B	70~95	4	40	5	175	80	80
SLG-3A/3B	120~150	6	50	6.3	225	125	85
SLG-4A/4B	185~240	6	50	6.3	225	125	85

紧固件为热镀锌钢制件

The fastener are hot-dip galvanized steel

压缩型铜铝过渡设备线夹

Al-Cu transition terminal connectors (Compression type)



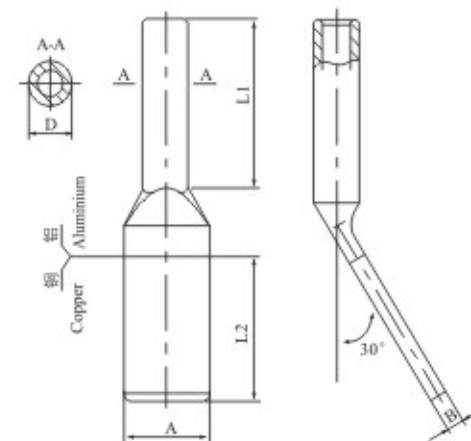
1) 铜铝过渡设备线夹(压缩型A型)

Al-Cu transition terminal connectors (compression type A)

型号 Catalog No.	适用导线 Suitable Conductor(mm ²)	主要尺寸 Dimensions(mm)				
		A	B	D	L ₁	L ₂
SYG-50A	LGJ-50	30	5.0	18	60	60
SYG-70A	LGJ-70	40	5.0	22	70	80
SYG-95A	LGJ-95	40	5.0	26	80	80
SYG-120A	LGJ-120	50	5.0	26	80	80
SYG-150A	LGJ-150	50	5.0	30	80	80
SYG-185A	LGJ-185	50	6.3	32	80	80
SYG-240/30A	LGJ-240/30	50	6.3	36	80	100
SYG-300/15A	LGJ-300/15	63	8.0	40	100	110
SYG-300/20A	LGJ-300/20	63	8.0	40	100	110
SYG-300/25A	LGJ-300/25	63	8.0	40	100	110
SYG-300/40A	LGJ-300/40	63	8.0	40	100	110
SYG-400/20A	LGJ-400/20	63	8.0	45	100	120
SYG-400/25A	LGJ-400/25	63	8.0	45	100	120
SYG-400/35A	LGJ-400/35	63	8.0	45	100	120
SYG-400/50A	LGJ-400/50	63	8.0	45	100	120
SYG-500/35A	LGJ-500/35	80	8.0	52	100	130
SYG-500/45A	LGJ-500/45	80	8.0	52	100	130
SYG-500/65A	LGJ-500/65	80	8.0	52	100	130
SYG-630/45A	LGJ-630/45	100	10.0	60	100	150
SYG-630/55A	LGJ-630/55	100	10.0	60	100	150
SYG-630/80A	LGJ-630/80	100	10.0	60	100	150
SYG-800/55A	LGJ-800/55	125	12.5	65	125	170
SYG-800/70A	LGJ-800/70	125	12.5	65	125	170
SYG-800/100A	LGJ-800/100	125	12.5	65	125	170

2) 铜铝过渡设备线夹(压缩型B型)

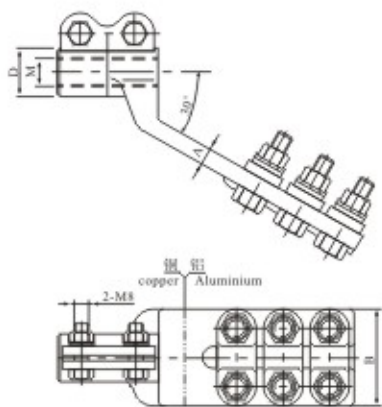
Al-Cu transition terminal connectors (compression type B)



型号 Catalog No.	适用导线 Suitable Conductor(mm ²)	主要尺寸 Dimensions(mm)				
		A	B	D	L ₁	L ₂
SYG-50B	LGJ-50	30	5.0	18	60	60
SYG-70B	LGJ-70	40	5.0	22	70	80
SYG-95B	LGJ-95	40	5.0	26	80	80
SYG-120B	LGJ-120	50	5.0	26	80	80
SYG-150B	LGJ-150	50	5.0	30	90	80
SYG-185B	LGJ-185	50	6.3	32	90	80
SYG-240/30B	LGJ-240/30	50	6.3	36	100	80
SYG-300/15B	LGJ-300/15	63	8.0	40	110	100
SYG-300/20B	LGJ-300/20	63	8.0	40	110	100
SYG-300/25B	LGJ-300/25	63	8.0	40	110	100
SYG-300/40B	LGJ-300/40	63	8.0	40	110	100
SYG-400/20B	LGJ-400/20	63	8.0	45	120	100
SYG-400/25B	LGJ-400/25	63	8.0	45	120	100
SYG-400/35B	LGJ-400/35	63	8.0	45	120	100
SYG-400/50B	LGJ-400/50	63	8.0	45	120	100
SYG-500/35B	LGJ-500/35	80	8.0	52	130	100
SYG-500/45B	LGJ-500/45	80	8.0	52	130	100
SYG-500/65B	LGJ-500/65	80	8.0	52	130	100
SYG-630/45B	LGJ-630/45	100	10.0	60	150	100
SYG-630/55B	LGJ-630/55	100	10.0	60	150	100
SYG-630/80B	LGJ-630/80	100	10.0	60	150	100
SYG-800/55B	LGJ-800/55	125	12.5	65	170	125
SYG-800/70B	LGJ-800/70	125	12.5	65	170	125
SYG-800/100B	LGJ-800/100	125	12.5	65	170	125

变压器用铜铝线夹

Copper-aluminium clamp for transformer



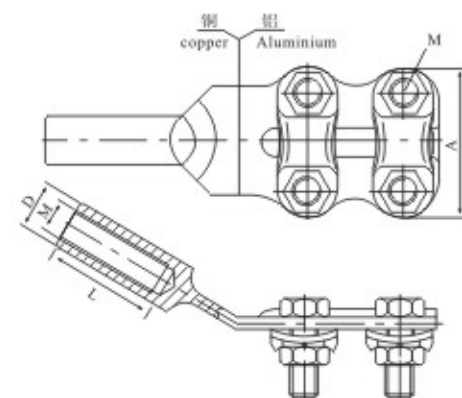
1) 变压器用铜铝线夹(特制带扣)

Copper-aluminium clamp for transformer

型号 Catalog No.	适用导杆螺纹 Applicable guide bar thread (mm)	主要尺寸 Dimensions(mm)			
		D	M	A	B
SBG-M12	12	22	12	6.7	50
SBG-M14	14	26	14	6.7	50
SBG-M16	16	26	16	7.0	50
SBG-M18	18	28	18	7.8	60
SBG-M20	20	30	20	7.8	60

2) 螺纹管式变压器线夹

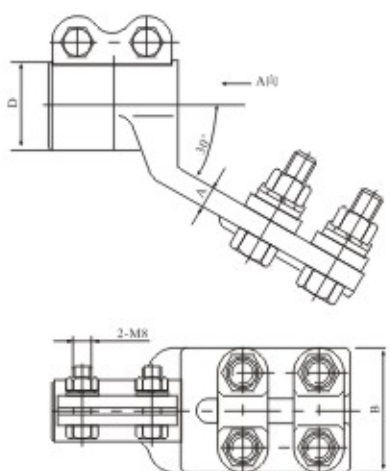
Transformer clamp (threaded pipe type)



型号 Catalog No.	适用导杆螺纹 Applicable guide bar thread (mm)	主要尺寸 Dimensions(mm)			
		D	M	A	B
SBG-1-M12	12	12	19	37	55
SBG-1-M14	14	14	21	37	56
SBG-1-M16	16	16	21	38	56
SBG-1-M18	18	18	24	45	63
SBG-1-M20	20	20	26	50	63

变压器用铜线夹

Copper clamp for transformer



1) 变压器用铜线夹A、B、C型(特制带扣)

Copper clamp types A,B and C for transformer

型号 Catalog No.	适用导杆螺纹 Applicable guide bar thread (mm)	主要尺寸 Dimensions(mm)			
		D	M	A	B
SBT-M12	12	22	12	6.5	50
SBT-M14	14	26	14	6.5	50
SBT-M16	16	26	16	6.5	50
SBT-M18	18	29	18	7.5	60
SBT-M20	20	31	20	7.5	60

JBL、JBT、JBTL 系列异型并沟线夹及绝缘罩(1kV、10kV、20kV)

JBL、JBT、JB-TL series parallel groove clamp specific form and insulation cover(1kV、10kV、20kV)

■ 用途 Application:

JBL、JBT、JB-TL系列异形并沟线夹适用于架空线路中导线的非承力接续与分支,与绝缘罩配套使用起防护绝缘作用。

JBL, JBT, JB-TL series specific forms parallel groove clamp is suitable for unendure force splicing and branch on the aerial wire, being used with insulation cover. Its action is insulation protection.

■ 结构特点 Structure feature

- ◆ 选用抗氧化铝合金材料
- ◆ 部件连体, 安装时不会掉件
- ◆ 圆弧大面积抱紧, 导线不易蠕变
- ◆ Select oxidize-resistance aluminium alloy.
- ◆ All parts connected with each other, it can't lose parts during installation.
- ◆ An arc embraces the most part, conductor can't change.

■ 绝缘罩性能特点 Insulation cover performance feature

- ◆ 1-10kV 产品工频耐压: $\geq 18kV$ 保压1分钟不击穿
- ◆ 20kV 产品工频耐压: $\geq 30kV$ 保压1分钟不击穿
- ◆ 绝缘电阻: $> 1.0 \times 10^{14} \Omega$
- ◆ 环境温度: $-30^\circ C \sim 90^\circ C$
- ◆ 耐候性能: 经人工气候老化试验1008小时后性能良好
- ◆ 1-10kV products Withstand voltage: $\geq 18kV$ keep voltage one minute not breakdown
- ◆ 20kV products Withstand voltage: $\geq 30kV$ keep voltage one minute not breakdown
- ◆ Insulation resistance: $> 1.0 \times 10^{14} \Omega$
- ◆ Environments temperature: $-30^\circ C \sim 90^\circ C$
- ◆ Weather proof performance: have good performed after 1008 hours artificial climate aging test.



■ 规格及技术参数 Specification

产品名称 Name	型号 Type	适用导线规格 Conductor(mm ²)
异型铝并沟线夹 Specific form aluminium parallel groove clamp	JBL-6-35	6-35
	JBL-16-70	16-70
	JBL-35-120A	35-120
	JBL-35-120B	
	JBL-50-240A	50-240
	JBL-50-240B	
	JBL-120-400A	120-400
	JBL-120-400B	

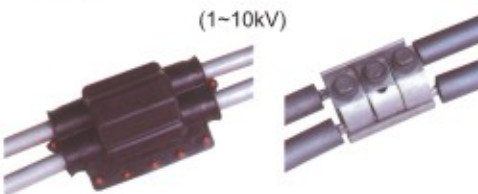
注: A型为两个螺栓, B型为三个螺栓。

NOTE: A-two bolts, B-three bolts

产品名称 Name	型号 Type	适用导线规格 Conductor(mm ²)
异型铝并沟线夹 Specific form copper parallel groove clamp	JBT-10-70	10-70
	JBT-35-120	35-120
	JBT-50-240	50-240
异型铝并沟线夹 Specific form Cu-Al parallel groove clamp	JBTL-10-70	10-70
	JBTL-35-120	35-120
	JBTL-50-240	50-240

铝异型并沟线夹(铁路专用)

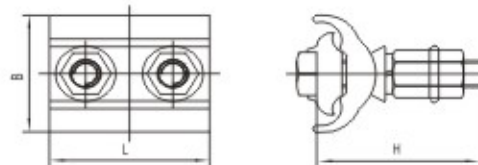
型号 Type	适用导线规格 Conductor(mm ²)	主要尺寸 Main size				对应型号
		L	B	H	M 螺栓数	
JBL-6-70	6-70	44	36	45	M8 2	PGA102
JBL-25-120	25-120	55	45	50	M8 2	PGA402
JBL-25-120	25-120	85	45	50	M8 3	PGA403
JBL-50-300	50-300	55	62	70	M10 2	PGA602
JBL-50-300	50-300	85	62	70	M10 3	PGA603



(20kV 专用)



(铁路专用并沟线夹)



NXH 系列铝合金耐张线夹

NXH series aluminium alloy strain clamp

■ 用途 Application:

NXH系列铝合金耐张线夹适用10kV及以下配电线路中,将架空铝导线和杆塔相联接。

NXH series aluminium alloy strain clamp is suitable for distribution line up to 10KV, connecting aerial aluminium conduct and pole tower.



■ 结构特点 Structure feature:

- ◆ 主体采用高强度, 抗氧化的铝合金
- ◆ 模块夹紧结构, 安装方便
- ◆ 无磁滞涡流损耗, 节能效果显著。
- ◆ The body made of high strength tighten aluminium alloy
- ◆ Tighten structure, easy installaiton
- ◆ No waste electric energy

■ 规格及技术参数 Specification

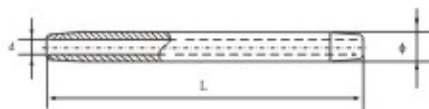
型号 Catalog No.	适用导线 Conductor	握力 Grip Strength(kN)	标称破坏载荷 Specified Failure Load(kN)
NXH-1	LJ50-LJ70	4.6~6.7	10.95
NXH-2	LJ95-LJ120	8.9~11.3	19.42

JY/LY 系列拉续管及绝缘罩

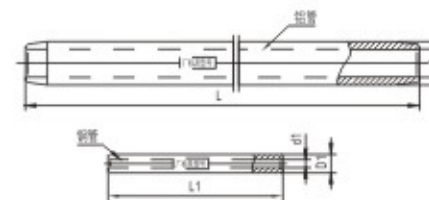
JY/LY splicing tube and insulation cover



JY(LY)接续管
JY(LY) splicing tube



JY、JY(LY)绝缘罩
JY、JY(LY) insulation cover



■ 用途 Application

JY/LY 系列接续管, 适用于架空线路中 1kV、10kV、20kV 架空绝缘导线的持续, 接续管与我公司专用绝缘罩配套使用, 起绝缘防护作用。

■ 规格及技术参数 Specification

JKLYJ 导线用

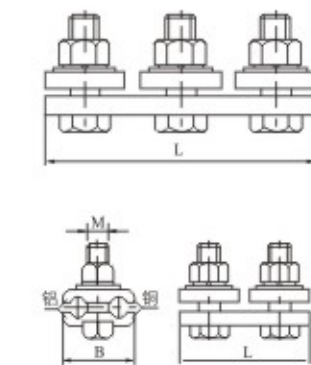
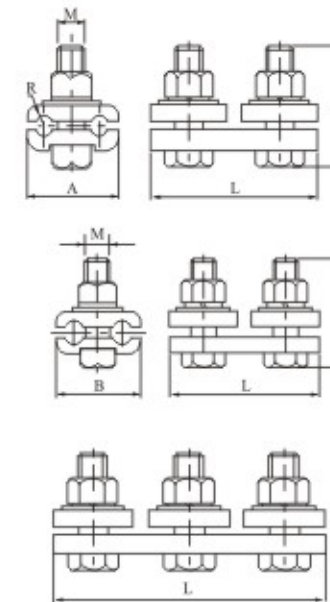
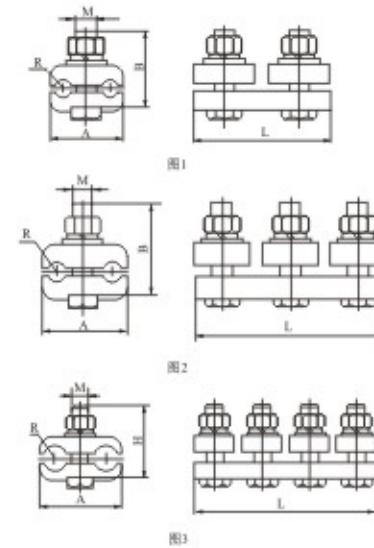
型号 Catalog No.	适用导线 Conductor(mm ²)	主要尺寸(mm)			握力 Grip Strength(kN)	配套绝缘罩 型号 No.
		d	Φ	L		
JY-35LY	JKLYJ-35	7.6	20	130	4.9	JY-35/50
JY-50LY	JKLYJ-50	9	20	140	6.7	JY-70/95
JY-70LY	JKLYJ-70	11	22	170	9.8	
JY-95LY	JKLYJ-95	12.5	24	180	13.0	JY-120/150
JY-120LY	JKLYJ-120	14	26	210	16.5	
JY-150LY	JKLYJ-150	15.5	28	240	20.0	JY-185/240
JY-185LY	JKLYJ-185	17	32	260	25.4	
JY-240LY	JKLYJ-240	19.5	34	290	33.0	
JY-300LY	JKLYJ-300	22	36	310	38.7	

JKLYGJ 导线用

型号 Catalog No.	适用导线 Conductor(mm ²)	主要尺寸(mm)							握力 Grip Strength(kN)
		L	D	d	L ₁	D ₁	d ₁		
JY-70/10	JKLYGJ70/10	360	26	13	110	12	4.5	21.0	
JY-95/15	JKLYGJ95/15	430	26	15	130	14	5.7	31.5	
JY-120/20	JKLYGJ120/20	430	30	16	130	14	6.2	36.9	
JY-150/25	JKLYGJ150/25	500	30	18.5	150	14	7.0	48.7	
JY-185/25	JKLYGJ185/25	520	32	20.5	150	14	7.0	53.5	
JY-240/30	JKLYGJ240/30	570	36	23	170	16	7.9	68.0	

并沟线夹

Parallel-groove clamp



1) 铝并沟线夹(铝绞线、钢芯铝绞线用)

Parallel-groove clamp(for ACSR for aluminium conductor)

型号 Type	适用绞线截面 Applicable conductor section (mm ²)	简图 FIG	主要尺寸 Dimensions (mm)				
			R	L	A	M	H
JB-0	16~25	1	3.5	70	37	10	40
JB-1	35~50	1	5.0	78	44	12	45
JB-2	70~95	2	7.0	112	52	12	55
JB-3	120~150	2	8.5	138	62	16	60
JB-4	185~240	2	11.0	142	71	16	65
JB-5	300~400	3	15.5	215	100	20	80
JB-6	500~630	3	18.5	230	110	20	90

线夹本体和盖板为铝合金件, 其余为热镀锌钢制件。

The body and keepers are aluminum alloy, the other parts are hot-dip galvanized steel.

2) 铜并沟线夹

Copper parallel-groove clamp

型号 Type	适用导线截面 Applicable conductor section mm ²	主要尺寸 Dimensions (mm)		
		B	M	L
JBT-11	35-50/35-50	40	10	60
JBT-21	70-95/35-50	50	12	99
JBT-22	70-95/70-95			
JBT-31	120-150/35-50	62	12	108
JBT-32	120-150/70-95			
JBT-33	120-150/120-150			
JBT-41	185-240/35-50	65	12	108
JBT-42	185-240/70-95			
JBT-43	185-240/120-150			
JBT-44	185-240/185-240			

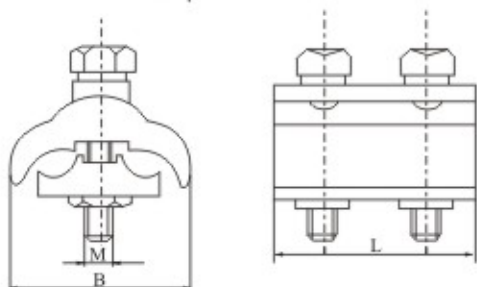
3) 铜铝并沟线夹

Copper-Aluminium parallel-groove clamp

型号 Type	适用铝线 Applicable aluminium model (mm ²)	适用铜线 Applicable copper wire	主要尺寸 Dimensions (mm)		
			B	M	L
JBTL-10	35-50	16-25	40	12	70
JBTL-11	35-50	35-50	40	12	70
JBTL-21	70-95	35-50	50	12	100
JBTL-22	70-95	70-95	50	12	100
JBTL-31	120-150	35-50	63	12	108
JBTL-32	120-150	70-95	63	12	108
JBTL-33	120-150	120-150	63	12	108
JBTL-41	185-240	35-50	65	12	110
JBTL-42	185-240	70-95	65	12	110
JBTL-43	185-240	120-150	65	12	110
JBTL-44	185-240	185-240	65	12	110

铝线夹

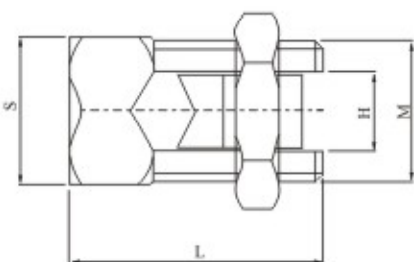
aluminium clamps



型号 Type	主要尺寸 mm		
	B	L	M
JBL-16-120	45	50	M8
JBL-10-150	50	50	M8
JBL-35-185	62	64	M10

铜螺栓线夹

Copper bolt clamp

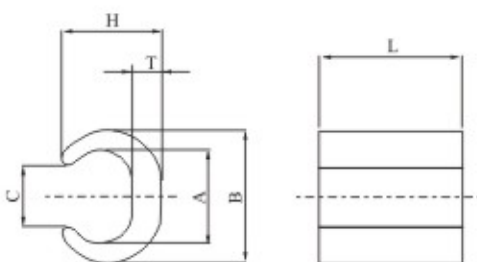


型号 Type	主要尺寸 Size mm			
	L	M	H	S
T/J-16	20	$1\frac{1}{2}$ -20	6	14
T/J-25~35	36	$1\frac{11}{16}$ -17	9	18
T/J-50~70	42	$1\frac{7}{8}$ -10	12	24
T/J-90~120	45	$1\frac{15}{16}$ -12	14	26
T/J-150~185	60	$1\frac{1}{8}$ -12	18	30
T/J-200~240	62	$1\frac{3}{16}$ -12	20	32

铜螺栓接线夹，采用 H62 黄铜压铸制造。
 Imported copper wire clamp, made of Brass H62 by die casting

C 型铜接线夹

C type copper connecting clamp

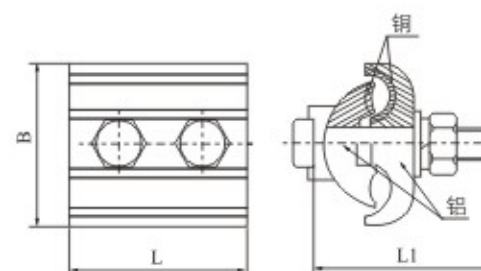
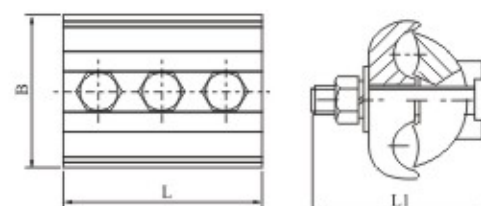
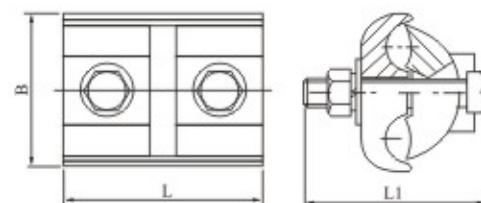
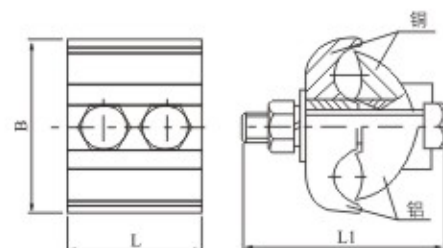


型号 Type	适用铜绞线面积(mm ²)	主要尺寸 mm					
		B	A	H	L	C	T
CCT-10	7.5~14	9.5	6.3	6.2	12	4	1.6
CCT-16	14.5~16	11.8	7.8	7.8	13	5	2
CCT-20	16.5~20	12.8	8.6	9.7	13	5.4	2.9
CCT-26	21~26	14.7	10.2	10	16	6.5	3.2
CCT-44	27~44	19	13.4	14.4	20	8.5	4
CCT-60	45~60	21	15.4	15.4	22	9.7	4
CCT-76	61~76	24.4	17.3	17.6	22	10.8	5
CCT-98	77~98	27.8	20.8	18.8	25	12.8	5
CCT-122	99~122	29.8	22.1	21.2	26	13.5	5.5
CCT-154	123~154	34	25.7	24.4	28	17	6
CCT-190	155~190	37	28.5	25.4	35	17.4	6
CCT-240	191~240	40	30.2	28.5	40	19	7
CCT-288	241~288	44.5	34.7	34.1	45	22.3	7
CCT-365	289~365	47.5	37.7	34	50	24.8	7
CCT-450	366~450	57	42.5	41	60	28	10
CCT-560	451~560	62	46	44	65	31	11
CCT-700	561~700	68	54	49.5	70	44	12

采用 C 型钢型材制成

异型并沟线夹

Specific form parallel-groove clamp



1) 铜铝异型并沟线夹

Cu-Al specific form parallel-groove clamp

型号 TYPE	适用导线型号 Applicable conductor model (mm ²)	主要尺寸 Dimensions(mm)			螺栓数量 Bolt No.
		L	L ₁	B	
JBTL-10~70A	10~70	40	40	36	2
JBTL-10~70B		60	40	36	3
JBTL-35~120A	35~120	45	55	48	2
JBTL-35~121B		70	55	48	3
JBTL-50~240A	50~240	45	70	60	2
JBTL-50~240B		70	70	60	3
JBTL-185~400A	185~400	60	75	75.5	2
JBTL-185~400B		90	75	75.5	3

2) 铜异型并沟线夹

Cu specific form parallel-groove clamp

型号 TYPE	适用导线型号 Applicable conductor model (mm ²)	主要尺寸 Dimensions(mm)			螺栓数量 Bolt No.
		L	L ₁	B	
JBT-10~70A	10~70	40	40	36	2
JBT-10~70B		60	40	36	3
JBT-35~120A	35~120	45	55	48	2
JBT-35~121B		70	55	48	3
JBT-50~240A	50~240	45	70	60	2
JBT-50~240B		70	70	60	3

3) 铝异型并沟线夹

Al specific form parallel-groove clamp

型号 TYPE	适用导线型号 Applicable conductor model (mm ²)	主要尺寸 Dimensions(mm)			螺栓数量 Bolt No.
		L	L ₁	B	
JBL-10~70A	10~70	43	45	36	2
JBL-10~70B		63	45	36	3
JBL-35~120A	35~120	46	50	45.5	2
JBL-35~121B		67	50	45.5	3
JBL-50~240A	50~240	47	70	63.5	2
JBL-50~240B		70	70	63.5	3
JBL-185~400A	185~400	70	70	74	2
JBL-185~400B		90	70	74	3

4) 铜铝异径并沟线夹(爆炸焊)

Cu-Al specific form parallel-groove clamp(Explosive welding)

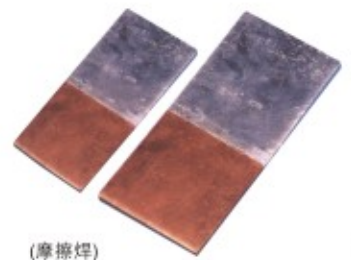
型号 TYPE	适用导线型号 Applicable conductor model (mm ²)	主要尺寸 Dimensions(mm)			螺栓数量 Bolt No.
		L	L ₁	B	
JBTL-35~120A	35~120	45	40	48	2
JBTL-35~121B		70	40	48	3
JBTL-50~240A	50~240	45	70	60	2
JBTL-50~240B		70	70	60	3



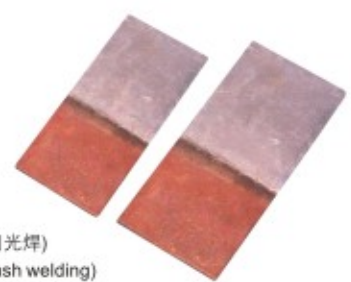
T/J 铜螺栓接线夹
copper connecting clamp



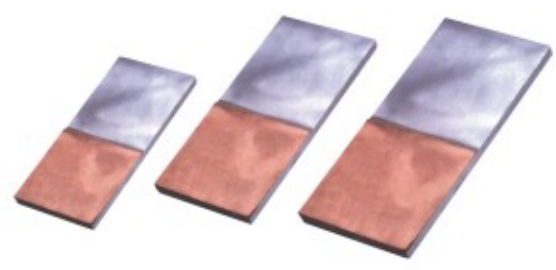
C 型铜接线夹
C type copper clamp



(摩擦焊)
(friction welding)



(闪光焊)
(flash welding)



铜铝过渡板 (爆炸焊)
copper to aluminium adapter board
(explosive wedging)

MG 铜铝过渡板
MG copper to aluminium adapter board



MSS 铜铝母线伸缩节
MSS copper aluminium expansion joint



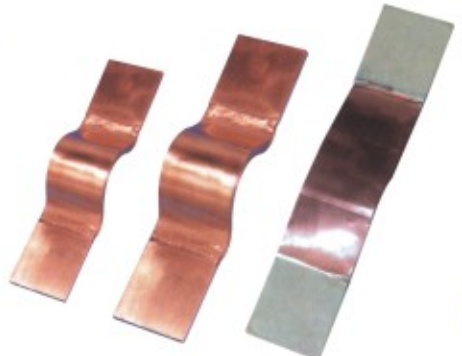
MS 铝母线伸缩节
MS Al bus-bar expansion joint



MG 铜铝过渡板 (钎焊)
MG copper to aluminium adapter board (Bolted)



MSS 铜铝母线伸缩节(爆炸焊)
MSS copper aluminium expansion joint (explosive wedging)



MST 铜母线伸缩节(氩弧焊、高分子扩散焊)
MST copper bus-bar expansion joint
(Argon-arc welding, macromolecule diffusion welding)



MGS 管母线伸缩节
MGS Al bus-bar expansion joint



JTL 四变二线夹(一组)
JTL Four-Bundle to Two-Bundle Clamps

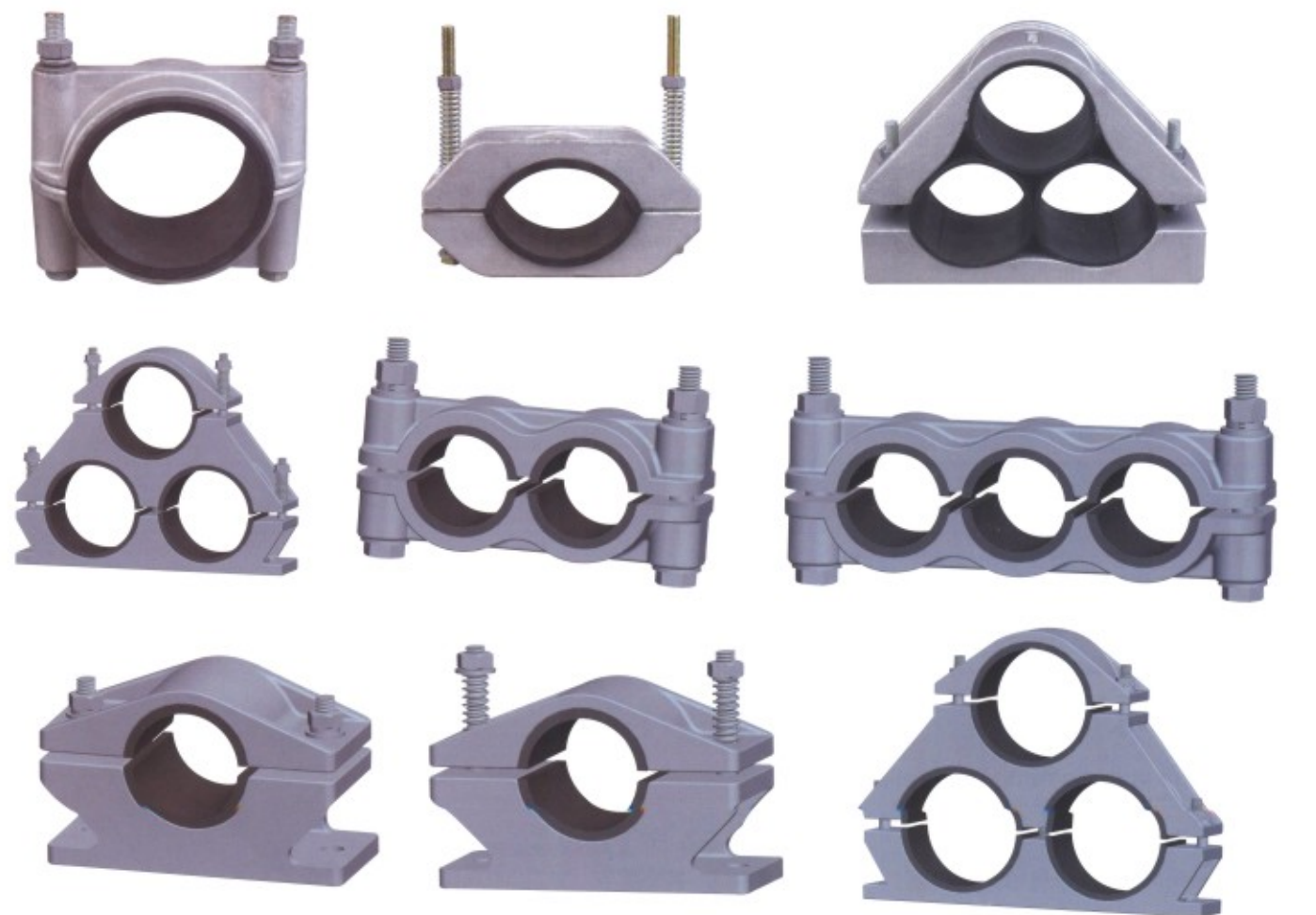
高压电缆固定夹

JGW High voltage cable cleat

■ 用途 Application

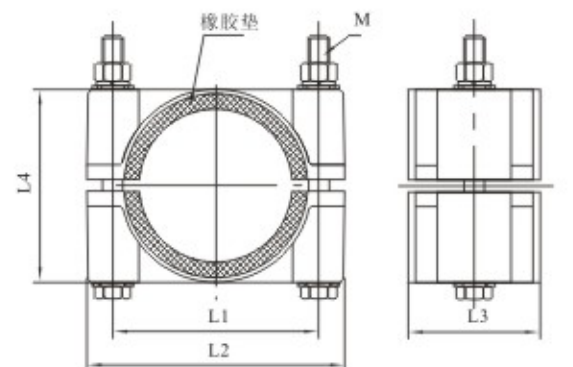
产品采用高强度防腐铝合金材料制造，用于固定电缆的摆放位置，其夹紧结构采用螺栓紧固，固定夹结构紧凑合理，安装方便灵活，不损伤电缆。

The product is made of high-strength anti-corrosive aluminum alloy to secure the placement of cables. Its fixture structure is anchored by bolts. The retaining clip is compact, reasonable in conformation, easy and flexible for installation and does not do harm to the cable



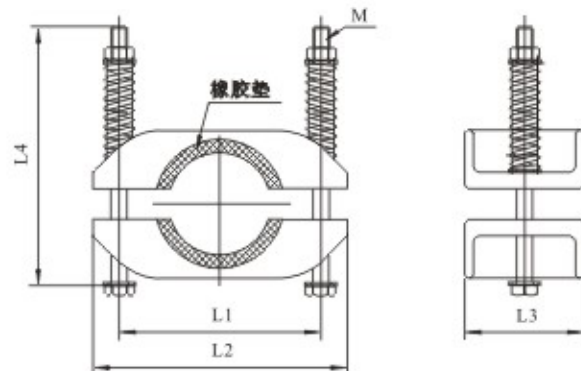
1) JGW型高压电缆固定夹(单线用)

型号 Type	适用电缆外径 Φ (mm) Applicable outside diameter of cable	L1	L2	L3	L4	M
JGW-1	75-84	120	150	80	114	2-M12
JGW-2	85-94	130	160	80	124	2-M14
JGW-3	95-104	140	175	80	138	2-M14
JGW-4	105-114	150	185	80	150	2-M14
JGW-5	115-124	160	195	90	160	2-M14
JGW-6	125-134	175	215	90	175	2-M16
JGW-7	135-146	190	230	100	195	2-M16
JGW-8	140-165	210	265	100	205	2-M16



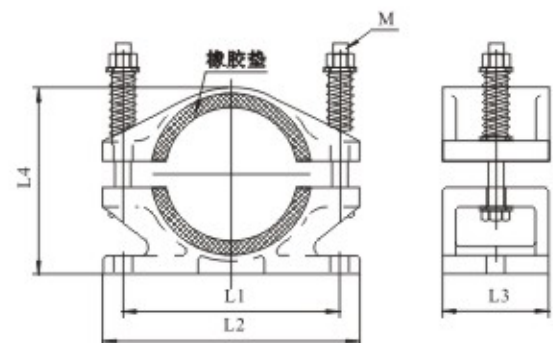
2) JGH 型高压电缆固定夹

型号 Type	适用电缆外径 Φ(mm) Applicable outside diameter of cable	L1	L2	L3	L4	M
JGH-01	55-65	127	160	75	160	2-M10
JGH-0	65-80	127	160	75	160	2-M10
JGH-1	80-100	148	182	80	180	2-M12
JGH-2	100-120	190	230	80	200	2-M12
JGH-3	120-136	192	230	80	220	2-M12
JGH-4	136-150	190	230	85	230	2-M12



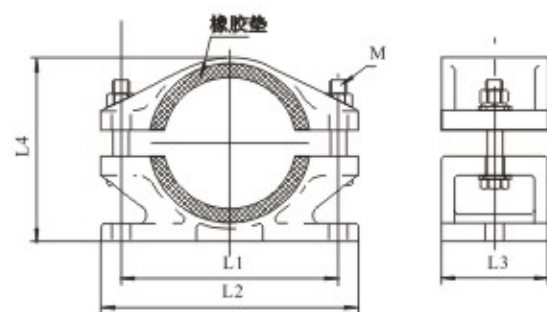
3) JGHD型高压电缆固定夹

型号 Type	适用电缆外径 Φ(mm) Applicable outside diameter of cable	L1	L2	L3	L4	M
JGHD-1	55-65	125	155	75	100	2-M10
JGHD-2	65-80	140	170	75	120	2-M10
JGHD-3	80-100	160	190	80	140	2-M12
JGHD-4	100-125	185	235	80	165	2-M12
JGHD-5	126-136	210	245	100	180	2-M12
JGHD-6	136-150	225	255	100	200	2-M12



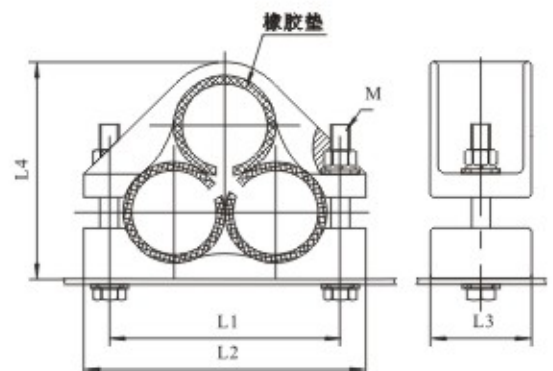
4) JGWD型高压电缆固定夹

型号 Type	适用电缆外径 Φ(mm) Applicable outside diameter of cable	L1	L2	L3	L4	M
JGWD-1	55-65	125	155	75	100	2-M10
JGWD-2	65-80	140	170	75	120	2-M10
JGWD-3	80-100	160	190	80	140	2-M12
JGWD-4	100-125	185	215	80	165	2-M12
JGWD-5	126-136	210	245	100	180	2-M12
JGWD-6	136-150	225	255	100	200	2-M12



5) JGP型高压电缆固定夹

型号 Type	适用电缆外径 Φ(mm) Applicable outside diameter of cable	L1	L2	L3	L4	M
JGP-1	45-55	150	180	65	135	2-M12
JGP-2	55-68	186	224	70	156	2-M12
JGP-3	68-80	224	274	75	186	2-M14
JGP-4	80-90	245	288	80	205	2-M14
JGP-5	90-100	280	332	100	235	2-M16
JGP-6	100-114	290	342	100	252	2-M16
JGP-7	114-130	300	352	100	265	2-M16



连接金具 Link fitting

在架空电力线路和变电所中连接金具的作用：一是用连接金具将悬式绝缘子组成串悬挂在杆塔上；二是用连接金具将直杆塔用的悬垂线夹或非直线杆塔用的耐张线夹与绝缘子串连接起来；其它如拉线杆塔的接线金具与杆塔的锚固，也都要用连接金具。

连接金具主要用于架空电力线路或变电所，将导线或避雷线耐张线夹绝缘子通过连接金具相连接、避雷线线夹与杆塔相连。按安装条件的不同，分专用连接金具和通用连接金具两类。专用连接金具指与绝缘子相连的球头挂环和碗头挂板。通用连接金具适用各种情况，按荷重吨位分级，荷重相同的同类金具有互换性，荷重相同、不同种类的连接金具有互锁性。

产品型号中字母挂板数字的意义为：

Q-球头挂环 P-平面(平行)接触 W-碗头 S-双联 U-U型 L-联板、拉杆、菱形 Z-直角 Y-延长 B-板 T-调整

Link fitting are used to link clamps to insulator, or to link insulator and ground wire clamps to tower arms or subsection structures. Link fitting have special type and common type in accordance with mounting condition. The special type includes the ball-eye and socket-clevis linking with insulator. The common type is usually pin connected type. They have different grades according to the load and are exchangeable for the same grade.

The meanings of letter & Arabic figures in the catalog are shown as follow.

Q-ball eye P-plane, parallel W-socket clevis S-double U-U type L-yoke plate, tension rod, rhomb Z-90° angle Y-extension B-plate T-Adjustmentable.



花蓝螺丝(槽形挂板)

Turnbuckles (Channel Clevises)

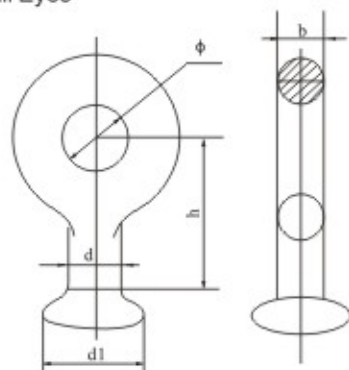


型号 Catalog No.	主要尺寸 Dimensions(mm)			标称破坏载荷 Specified Failure Load (≥ kN)	参考重量 Weight (kg)
	L	C	Φ		
LH-10C	570~730	20	20	100	7.0
LH-12C	570~730	30	20	120	8.0
LH-20C	570~730	30	30	200	14.5

闭口销为不锈钢件，其余为热镀锌钢制件
The cotter pin are stainless steel, the other parts are hot-dip galvanized steel.

球头挂环

Ball Eyes

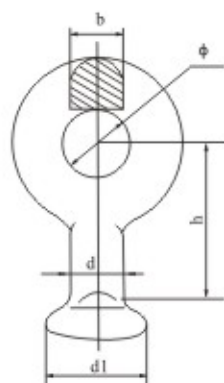


型号 Catalog No.	主要尺寸 Dimensions(mm)					标称破坏载荷 Specified Failure Load (≥ kN)	参考重量 Weight (kg)
	d	Φ	b	d1	h		
Q-7	17	22	16	33.3	50	70	0.27

热镀锌钢制件
Hot-dip galvanized steel

球头挂环

Ball Eyes

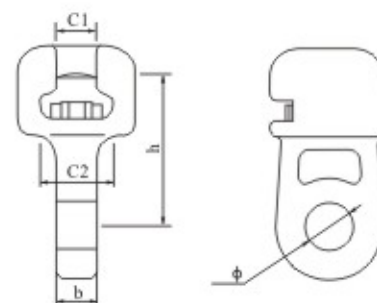


型号 Catalog No.	主要尺寸 Dimensions(mm)						标称破坏载荷 Specified Failure Load (≥ kN)	参考重量 Weight (kg)
	d	Φ	b	d1	h	IEC标记		
QP-7	17	20	16	33.3	50	16	70	0.27
QP-10	17	20	16	33.3	50	16	100	0.32
QP-12	21	24	18	41.0	60	20	120	0.40
QP-12G	17	24	17	33.3	50	16	120	0.40
QP-16	21	26	20	41.0	60	20	160	0.50
QP-20	25	30	24	49.0	80	24	200	0.95
QP-21D	21	30	24	41.0	70	20	210	0.90
QP-30	25	39	28	49.0	80	24	300	1.05

热镀锌钢制件
Hot-dip galvanized steel

碗头挂板

Socket Clevises

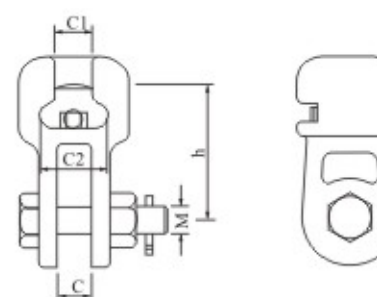


型号 Catalog No.	主要尺寸 Dimensions(mm)						标称破坏载荷 Specified Failure Load (≥ kN)	参考重量 Weight (kg)
	b	C1	C2	h	Φ	IEC标记		
W-7A	16	19.2	34.5	70	20	16	70	0.80
W-7B	16	19.2	34.5	115	20	16	70	0.92
W-10	18	20.0	34.5	85	20	16	100	0.90
W-12	20	19.2	34.5	90	24	16	120	1.30

W型锁紧销为不锈钢件，其余为热镀锌钢制件
The W-pin are stainless steel, the other parts are hot-dip galvanized steel.

碗头挂板

Socket Clevises

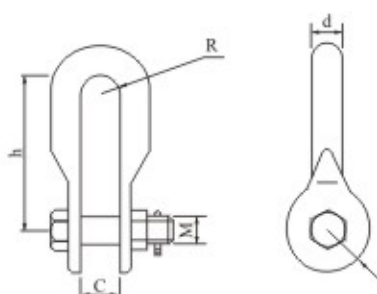


型号 Catalog No.	主要尺寸 Dimensions(mm)						标称破坏载荷 Specified Failure Load (≥ kN)	参考重量 Weight (kg)
	C	C1	C2	M	h	IEC标记		
WS-7	18	19.2	34.5	16	70	16	70	0.97
WS-10	20	19.2	34.5	18	85	16	100	1.70
WS-12	24	23.0	42.5	22	85	16	120	3.81
WS-12G	20	19.2	34.5	18	85	16	120	1.70
WS-16	26	23.0	42.5	24	95	20	160	2.64
WS-20	30	27.5	51.0	27	100	24	200	3.90
WS-21DF	30	23.0	42.5	27	100	20	210	4.50
WS-30	38	27.5	51.0	36	100	24	300	5.70

W型锁紧销为不锈钢件，其余为热镀锌钢制件
The W-pin are stainless steel, the other parts are hot-dip galvanized steel.

U型挂环

Shackles (Type U)

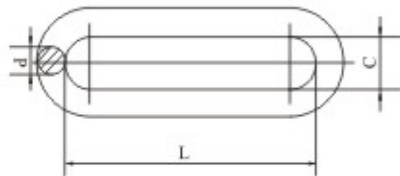


型号 Catalog No.	主要尺寸 Dimensions(mm)						标称破坏载荷 Specified Failure Load (≥ kN)	参考重量 Weight (kg)
	C	M	d	h	R	r		
U-7	20	16	16	80	10	22	70	0.44
U-10	22	18	18	85	11	24	100	0.54
U-12	24	22	20	90	12	30	120	0.96
U-16	26	24	22	95	13	32	160	1.47
U-20	30	27	24	100	15	36	200	2.20
U-25	34	30	26	110	17	40	250	2.79
U-30	38	36	30	130	19	46	300	3.75
U-40	42	42	36	150	21	50	400	6.80

闭口销为不锈钢件，其余为热镀锌钢制件
The cotter pin are stainless steel, the other parts are hot-dip galvanized steel.

延长环

Chain Links

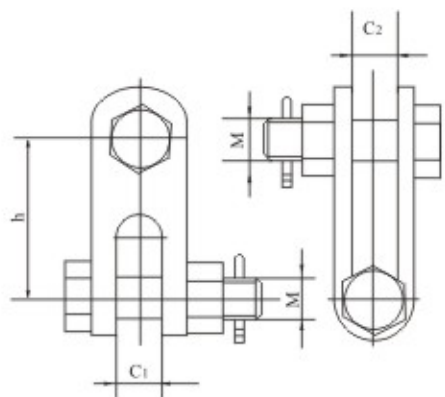


型号 Catalog No.	主要尺寸 Dimensions(mm)			标称破坏载荷 Specified Failure Load (≥ kN)	重量 Weight (kg)
	C	d	L		
PH-7	20	16	80	70	0.34
PH-10	22	18	100	100	0.49
PH-12	24	20	120	120	0.73
PH-16	26	22	140	160	0.97
PH-20	30	24	160	200	1.27
PH-25	34	26	160	250	1.62
PH-30	38	30	180	300	2.59
PH-2012	30	24	120	200	0.80

注：用户可以自定挂环的长度L值，型号按例子写出。
例：L=500mm挂环破坏荷重不小于20吨，型号为PH-2050热镀锌钢制件。
All parts are steel and hot-dip galvanized.

挂板

Clevis - Clevises

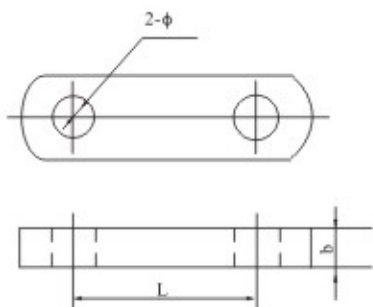


型号 Catalog No.	主要尺寸 Dimensions(mm)				标称破坏载荷 Specified Failure Load (≥ kN)	重量 Weight (kg)
	C1	C2	M	h		
Z-7	18	18	16	80	70	0.56
Z-10	20	20	18	80	100	0.87
Z-12	24	24	22	100	120	1.16
Z-16	26	26	24	100	160	2.38
Z-20	30	30	27	120	200	3.80
Z-25	33	34	30	120	250	5.00
Z-30	38	38	36	120	300	5.80
Z-40	44	44	42	180	400	14.00

挂板主体与紧固件均为热镀锌钢制件。
All parts are steel and hot-dip galvanized.

平行挂板

Parallel Clevises



型号 Catalog No.	主要尺寸 Dimensions(mm)			标称破坏载荷 Specified Failure Load (≥ kN)	重量 Weight (kg)
	b	Φ	L		
PD-7C	16	18	100	70	0.45
PD-10C	18	20	110	100	0.67
PD-12C	20	24	130	120	0.94

挂板主体与紧固件均为热镀锌钢制件。
All parts are steel and hot-dip galvanized.



MSG双软母线固定金具
MSG supports for double cables



MGT管母线T接金具
MST T-connector for tubular bus



MGZ、MGF管母线封端球、封端盖
MGZ、MGF Tubular bus end-caps and ball



MGGD、MGS管母线伸缩线夹
MGGD、MGS Expansion clamp for tubular bar



MGD管母线与导线接续金具 MJ型管母线接头(外接头)
MGD Splicing fitting for tubular and conductor Tubular bus-bar joints(Type MJ/W,outside)



CGU型悬垂线夹
CGU Suspension clamps



CGF型悬垂线夹
CGF Suspension clamp

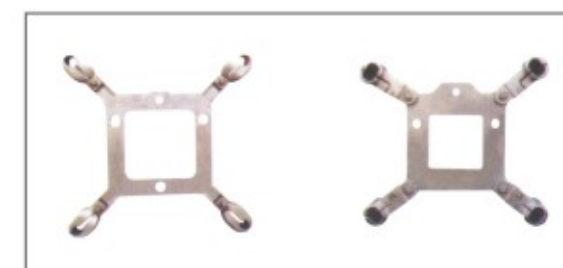


CGH铝合金线夹(提包式) XTS型悬垂线夹
CGH aluminium alloy clamp(envelop type) XTS Suspension clamps



CF型悬垂线夹
CF Suspension clamps

CFK型悬垂线夹
CFK Suspension clamps



XT4型跳线悬垂线夹
XT4 Suspension clamps for jumper conductors

XTF4型跳线悬垂线夹
XTF4 Suspension clamps for jumper conductors



CSH 型垂直排列双线夹
CSH perpendicular double clamp



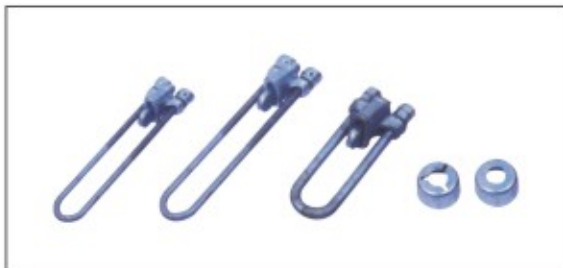
XCS 型悬垂线夹(双导线用)
XCS Suspension clamps for twin conductors



XHG 出口型悬垂线夹
XHG Suspension wire clamp for exporting use



NLD 螺栓型耐张线夹
NLD strain clamp (bolt type)



NUT 线夹(可调式) UT 线夹 防盗帽
NUT clamp (adjustable type) UT clamp Robproof cap



NX 楔型线夹
NX strain clamp (wedge type)



T/J 铜螺栓接线夹
Copper connecting clamp



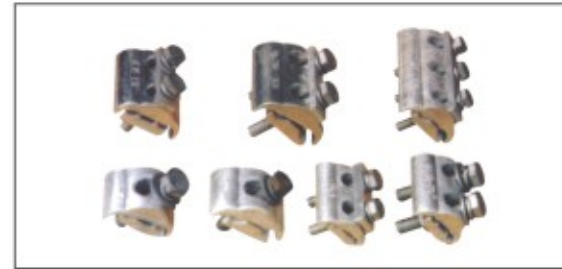
JK 钢线卡子
JK steel guy clip



铜铝、铝并沟线夹 CAPG-A、CAPG-B、CAPG-C
Cu-Al、Al specific form parallel-groove clamp
(CAPG-A、CAPG-B、CAPG-C)



铜铝、铝并沟线夹 JAPG
Cu-Al、Al specific form parallel groove clamp (JAPG)



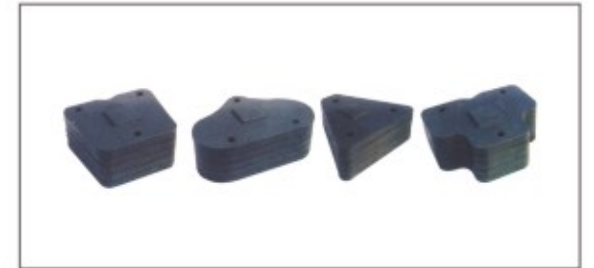
APG 铝并沟线夹
APG aluminium parallel groove clamp



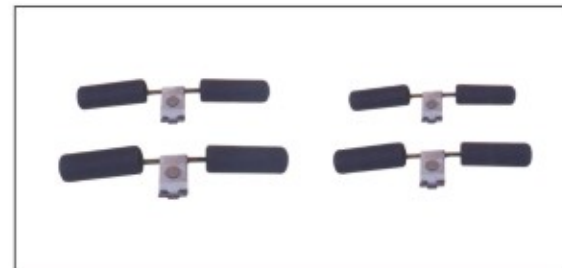
出口铜接线夹
Copper connecting clamp



FJH-K 型均压环 FJH-K 型均压环
FJH-K type equal voltage rings FJH-K type equal voltage rings



ZD 型重锤片 ZC 型重锤片
ZD type weights pieces ZC type weights pieces



FD 防振锤 FG 防振锤 FF 防振锤
FD dampers FG dampers FF dampers



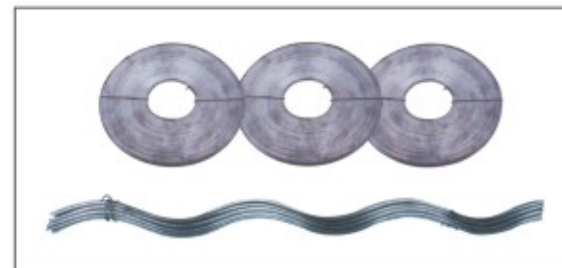
FR 防振锤 FRD 防振锤 FDZ 防振锤
FR dampers FRD dampers FDZ dampers



MRJ 软母线间隔棒
MRJ bus-bar spacing board



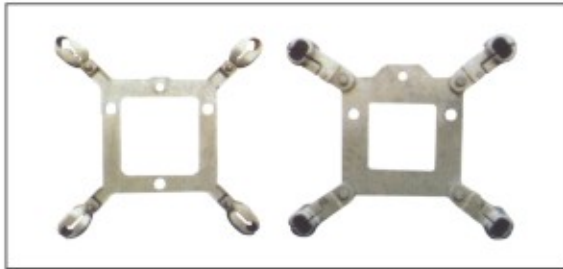
FJQ 间隔棒 MRJ 双分裂间隔棒
FJQ spacer MRJ spacer for double conductor



FLD 铝包带 FYH 预绞丝护线条
FLD aluminium armor tape FYH preformed armor rod



跳线间隔棒 跳线阻尼间隔棒
Jumper spacer Jumper spacer dampers



FJZ 框架型阻尼间隔棒 JZF 方型阻尼间隔棒
FJZ square frame type spacer dumpers JZF square frame type spacer dumpers



U、UJ型螺丝 心形环 W型锁紧销
U、UJ-Bolt Thinble W type closed-pin



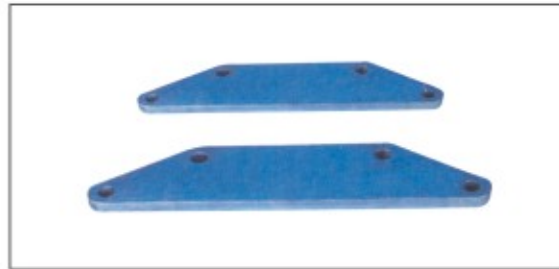
Q、QP、U 型球头挂环 U、UL型挂环
Q、QP、U type ball-eye Shackle(U、UL type)



UB、Z、ZS 型直角挂板 ZH 型挂环 P、PS型平行挂板
UB、Z、ZS right angle hung plates ZH link P、PS type parallel clevis



PD 挂板 W、WS 型碗头挂板
PD clevis W、WS type socket clevis eye



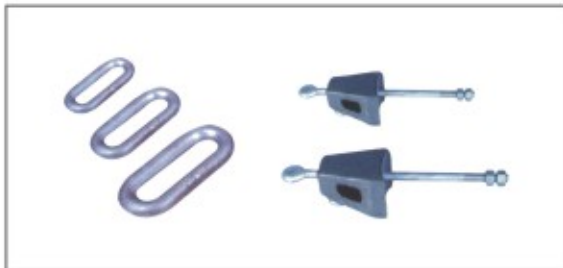
LS 联板
LS yoke plate



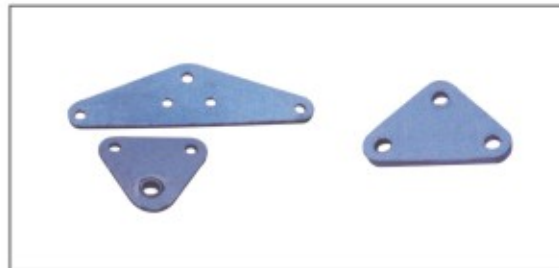
YLP 拉杆 花兰螺丝
YLP Extension rods Turnbuckles



QY 型牵引板 PT 调整板
QY towing plates PT adjusting plates



PH 型延长环 BD 避雷线悬垂吊架
PH type extension ring BD ground wire hangers



L 型联板 LV 型联板
L yoke plate LV yoke plate



WCJB 梅花型铜接线夹
WCJB Quincunx copper connecting clamp



YZ 带电装卸线夹
YZ Clamps for hot line work



铜铝导电带接线夹
Copper-Aluminium Conductor with jointing Clamp



铜铝活动线夹 铜铝双头接线端子
Copper-Aluminium movable clamp Bimetallic double Bolt connector



MNP、MNL 户内矩形母线固定金具
MNP、MNL indoor support for rectangular bar



MWP、MWL 户外矩形母线固定金具
MWP、MWL loutdoor support for rectangular bar



MJG 矩形母线间隔垫 MCG 槽形母线间隔垫
MJG spacers for rectangular bar MCG spacers for chanbel bar



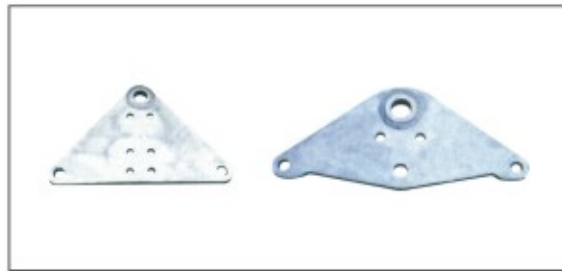
MCN、MCW 槽形母线固定金具
MCN、MCW supports for channel bar



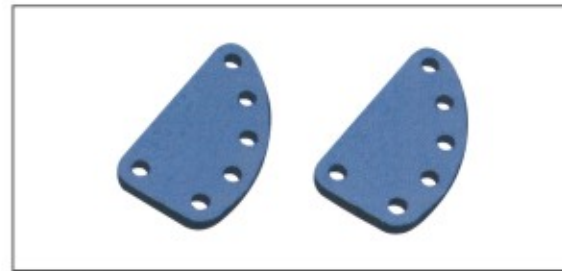
MDU 管母线悬挂金具 MSG 软母线固定金具
MDU suspending fitting for tubular bus MSG supports cable



MGG 管母线固定金具
MGG supports for tubular bus



LL 型联板
LL yoke plate



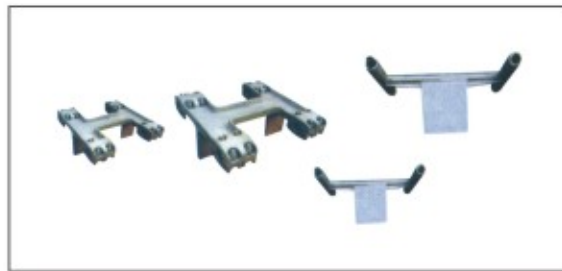
DB 型调整板
DB adjusting plates



TL 双导线T型线夹
TL Double conduct T-connector



TLY T 型线夹 TLY T-connector
TL 型单导线T型线夹 TL-Connector for single conductor(Type TL)



TLS 型双导线双引下线T型线夹(螺栓型) TYS 型双导线T型线夹(压缩型)
T-Connector for double conductor(Type TLS) T-Connector for double conductor(Type TYS)



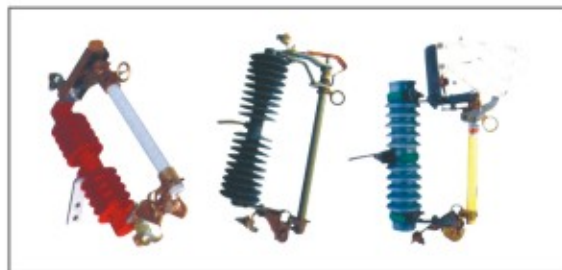
TLS、TL 型线夹
TLS、TL connector



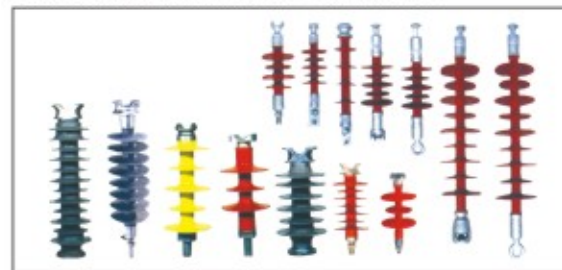
绝缘T型线夹
Insulation T-connectors



1KV、10KV热缩电缆终端 10KV、35KV冷缩电缆终端
1KV、10KV heat shrink Indoor & Outdoor Cable Terminations 10KV、35KV cold shrink termination



跌落式熔断器
Drop-out fuse



绝缘子
Insulator

叉形裸端头(TU型)

Furcate Naked Terminal(TYPE TU)

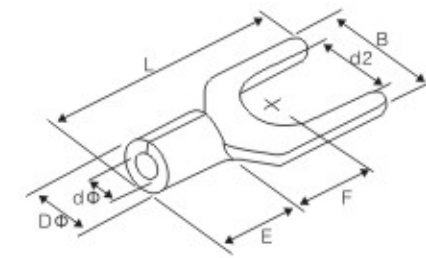


导线截面: 0.5~1.5mm²(美国线规22~16) 最大电流: I_{max}=19A 材质: 紫铜

型号 ITEM NO	美制螺栓号 USA screw	螺栓口直径 screw dia. D2(mm)	尺寸 Dimension(mm)					
			B	L	F	E	DΦ	dΦ
SNB 1.25-3.2	#4	3.2	5.7	16.0	6.5	4.5	3.4	1.7
SNB 1.25-3.7S	#6	3.7	5.7	16.0	6.5			
SNB 1.25-3.7L	#6	3.7	6.4	16.0	6.5			
SNB 1.25-4S	#8	4.3	6.4	16.0	6.5			
SNB 1.25-4M	#8	4.3	7.2	16.0	6.5			
SNB 1.25-4L	#8	4.3	8.0	16.0	6.5			
SNB 1.25-5S	#10	5.3	8.0	15.3	6.5			
SNB 1.25-5L	#10	5.3	9.5	15.3	6.5			
SNB 1.25-6S	1/4	6.4	9.5	16.0	6.5			
SNB 1.25-6L	1/4	6.4	12.0	22.0	11.0			

导线截面: 1.5~2.5mm²(美国线规16~14) 最大电流: I_{max}=27A 材质: 紫铜

型号 ITEM NO	美制螺栓号 USA screw	螺栓口直径 screw dia. D2(mm)	尺寸 Dimension(mm)					
			B	L	F	E	DΦ	dΦ
SNB 2-3	#4	3.2	5.7	16.0	6.5	4.5	4.1	2.3
SNB 2-3.5S	#6	3.7	5.7	16.0	6.5			
SNB 2-3.5L	#6	3.7	6.4	16.0	6.5			
SNB 2-4S	#8	4.3	6.4	16.0	6.5			
SNB 2-4M	#8	4.3	7.2	16.0	6.5			
SNB 2-4L	#8	4.3	8.0	16.0	6.5			
SNB 2-5S	#10	5.3	8.0	15.3	6.5			
SNB 2-5L	#10	5.3	9.5	15.3	6.5			
SNB 2-6S	1/4	6.4	9.5	16.0	6.5			
SNB 2-6L	1/4	6.4	12.0	22.0	11.0			



叉形预绝缘端头(TU-JTK型)

Furcate Pre-insulating Terminal(TYPE TU-JTK)

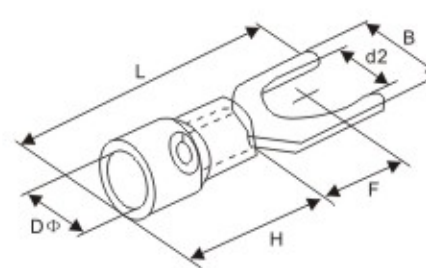
导线截面: 0.5~1.5mm²(美国线规22~16) 最大电流: I_{max}=19A 材质: 紫铜

型号 ITEM NO	美制螺栓号 USA screw	螺栓口直径 screw dia. D2(mm)	尺寸 Dimension(mm)					颜色 color
			B	L	F	H	DΦ	
SV 1.25-3	#4	3.2	5.7	21.2	6.5	10.0	4.3	● 红 red
SV 1.25-3.5S	#6	3.7	5.7	21.2	6.5			
SV 1.25-3.5L	#6	3.7	6.4	21.2	6.5			
SV 1.25-4S	#8	4.3	6.4	21.2	6.5			
SV 1.25-4M	#8	4.3	7.2	21.2	6.5			
SV 1.25-4L	#8	4.3	8.1	21.2	6.5			
SV 1.25-5S	#10	5.3	8.1	21.2	6.5			
SV 1.25-5L	#10	5.3	9.5	21.2	6.5			
SV 1.25-6S	1/4	6.4	9.5	21.2	6.5			
SV 1.25-6L	1/4	6.4	12.0	27.2	11.0			



导线截面: 1.5~2.5mm²(美国线规16~14) 最大电流: I_{max}=27A 材质: 紫铜

型号 ITEM NO	美制螺栓号 USA screw	螺栓口直径 screw dia. D2(mm)	尺寸 Dimension(mm)					颜色 color
			B	L	F	H	DΦ	
SV 2-3	#4	3.2	5.7	21.2	6.5	10.0	4.9	● 蓝 blue
SV 2-3.5S	#6	3.7	5.7	21.2	6.5			
SV 2-3.5L	#6	3.7	6.4	21.2	6.5			
SV 2-4S	#8	4.3	6.4	21.2	6.5			
SV 2-4M	#8	4.3	7.2	21.2	6.5			
SV 2-4L	#8	4.3	8.1	21.2	6.5			
SV 2-5S	#10	5.3	8.1	21.2	6.5			
SV 2-5L	#10	5.3	9.5	21.2	6.5			
SV 2-6S	1/4	6.4	9.5	21.2	6.5			
SV 2-6L	1/4	6.4	12.0	27.2	11.0			



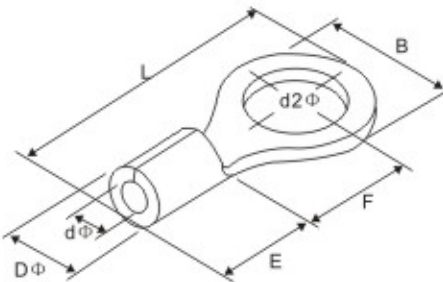
圆形裸端头(TO型)

Circular Naked Terminal(TYPE TO)



导线截面: 0.5~1.5mm²(美国线规22~16) 最大电流: I_{max}=19A 材质: 紫铜

型号 ITEM NO	美制螺栓号 USA screw	螺栓口直径 screw dia. D2(mm)	尺寸 Dimension(mm)						
			B	L	F	E	DΦ	dΦ	
RNB 1.25-3	#4	3.2	5.7	12.6	4.95	4.5	3.4	1.7	
RNB 1.25-3.5S	#6	3.7	5.7	12.6	4.95				
RNB 1.25-3.5M	#6	3.7	6.6	14.4	6.3				
RNB 1.25-3.5L	#6	3.7	8.0	15.8	7.0				
RNB 1.25-4S	#8	4.3	6.6	14.4	6.3				
RNB 1.25-4L	#8	4.3	8.0	15.4	7.0				
RNB 1.25-5	#10	5.3	8.0	15.4	7.0				
RNB 1.25-5L	#10	5.3	9.8	18.0	8.5				
RNB 1.25-6S	1/4	6.4	9.8	18.0	8.5				
RNB 1.25-6	1/4	6.4	11.6	21.5	11.1				
RNB 1.25-8	5/16	8.4	11.6	21.5	11.1				
RNB 1.25-10	3/8	10.5	13.6	25.5	13.9				
RNB 1.25-12	1/2	13.0	18.5	29.0	16.5				



导线截面: 1.5~2.5mm²(美国线规16~14) 最大电流: I_{max}=27A 材质: 紫铜

型号 ITEM NO	美制螺栓号 USA screw	螺栓口直径 screw dia. D2(mm)	尺寸 Dimension(mm)						
			B	L	F	E	DΦ	dΦ	
RNB 2-3	#4	3.2	6.6	12.3	4.3	4.5	4.1	2.3	
RNB 2-3.5S	#6	3.7	6.6	12.3	4.3				
RNB 2-3.5M	#6	3.7	6.6	16.0	7.0				
RNB 2-3.5L	#6	3.7	8.5	16.8	7.75				
RNB 2-4S	#8	4.3	6.6	16.0	7.0				
RNB 2-4L	#8	4.3	8.5	16.8	7.75				
RNB 2-5S	#10	5.3	8.5	16.8	7.75				
RNB 2-5L	#10	5.3	9.5	16.8	7.25				
RNB 2-6	1/4	6.4	12.0	21.5	11.0				
RNB 2-8	5/16	8.4	12.0	21.5	11.0				
RNB 2-10	3/8	10.5	13.6	25.5	13.9				
RNB 2-12	1/2	13.0	19.2	29.0	16.5				

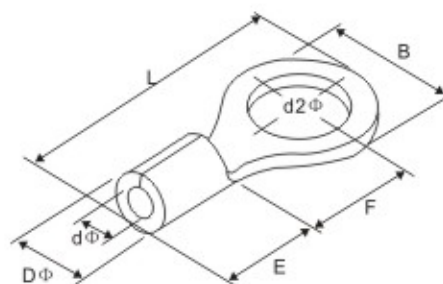
圆形裸端头(TO型)

Circular Naked Terminal(TYPE TO)



导线截面: 6~10mm²(美国线规8) 最大电流: I_{max}=62A 材质: 紫铜

型号 ITEM NO	美制螺栓号 USA screw	螺栓口直径 screw dia. D2(mm)	尺寸 Dimension(mm)						
			B	L	F	E	DΦ	dΦ	
RNB 8-4	#8	4.3	8.8	23.8	9.3	8.0	7.2	4.5	
RNB 8-5S	#10	5.3	8.8	23.8	11.1				
RNB 8-5M	#10	5.3	12.0	23.8	9.3				
RNB 8-5L	#10	5.3	15.0	29.8	13.8				
RNB 8-6S	1/4	6.4	12.0	23.8	9.3				
RNB 8-6L	1/4	6.4	15.0	29.8	13.8				
RNB 8-8	5/16	8.4	15.0	29.8	13.8				
RNB 8-10	3/8	10.5	15.0	29.8	13.8				
RNB 8-12	1/2	13.0	20.0	33.5	15.0				



导线截面: 10~16mm²(美国线规6) 最大电流: I_{max}=88A 材质: 紫铜

型号 ITEM NO	美制螺栓号 USA screw	螺栓口直径 screw dia. D2(mm)	尺寸 Dimension(mm)						
			B	L	F	E	DΦ	dΦ	
RNB 14-4	#8	4.3	12.0	29.0	13.3	10.0	9.0	5.8	
RNB 14-5	#10	5.3	12.0	29.0	13.3				
RNB 14-6S	1/4	6.4	12.0	29.0	13.3				
RNB 14-6L	1/4	6.4	16.0	31.0	13.3				
RNB 14-8	5/16	8.4	16.0	31.0	14.5				
RNB 14-10	3/8	10.5	16.0	31.0	14.5				
RNB 14-12	1/2	13.0	22.0	41.0	19.5				

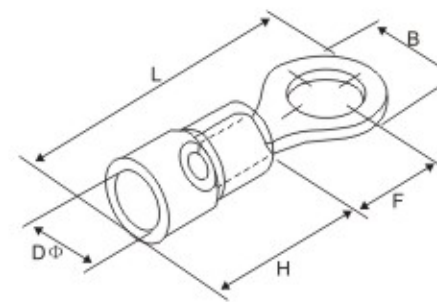
圆形预绝缘端头(TO-JTK型)

Circular Pre-insulating Terminal(TYPE TO-JTK)



导线截面: 0.5~1.5mm²(美国线规22~16) 最大电流: I_{max}=19A 材质: 紫铜

型号 ITEM NO	美制螺栓号 USA screw	螺栓口直径 screw dia. D2(mm)	尺寸 Dimension(mm)						颜色 color
			B	L	F	H	DΦ		
RV 1.25-3	#4	3.2	5.7	17.8	4.95	10.0	4.3	红 red	
RV 1.25-3.5S	#6	3.7	5.7	17.8	4.95				
RV 1.25-3.5M	#6	3.7	6.6	20.0	6.3				
RV 1.25-3.5L	#6	3.7	8.0	21.5	7.0				
RV 1.25-4S	#8	4.3	6.6	20.1	6.3				
RV 1.25-4L	#8	4.3	8.0	21.5	7.0				
RV 1.25-5	#10	5.3	8.0	21.5	7.0				
RV 1.25-5L	#10	5.3	9.8	23.0	8.5				
RV 1.25-6S	1/4	6.4	9.8	23.0	8.5				
RV 1.25-6	1/4	6.4	11.6	27.5	11.1				
RV 1.25-8	5/16	8.4	11.6	27.5	11.1				
RV 1.25-10	3/8	10.5	13.6	31.6	13.9				
RV 1.25-12	1/2	13.0	19.2	36.0	16.5				



导线截面: 1.5~2.5mm²(美国线规16~14) 最大电流: I_{max}=27A 材质: 紫铜

型号 ITEM NO	美制螺栓号 USA screw	螺栓口直径 screw dia. D2(mm)	尺寸 Dimension(mm)						颜色 color
			B	L	F	H	DΦ		
RV 2-3	#4	3.2	6.6	17.8	4.3	10.0	4.9	蓝 blue	
RV 2-3.5S	#6	3.7	6.6	17.8	4.3				
RV 2-3.5M	#6	3.7	6.6	21.0	7.0				
RV 2-3.5L	#6	3.7	8.5	22.5	7.75				
RV 2-4S	#8	4.3	6.6	21.0	7.0				
RV 2-4L	#8	4.3	8.5	22.5	7.75				
RV 2-5S	#10	5.3	8.5	22.5	7.75				
RV 2-5L	#10	5.3	9.5	22.5	7.25				
RV 2-6	1/4	6.4	12.0	27.6	11.0				
RV 2-8	5/16	8.4	12.0	27.6	11.5				
RV 2-10	3/8	10.5	13.6	30.0	13.9				
RV 2-12	1/2	13.0	19.2	36.5	16.5				

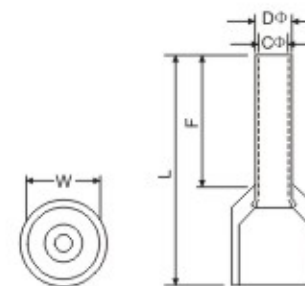
双线管形预绝缘端头

Crewel Tube Pre-insulating Terminal



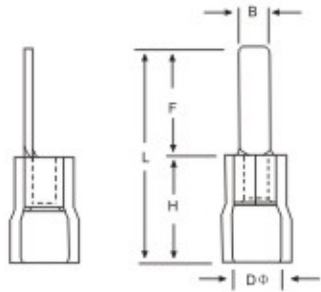
最大耐压: 105℃ U_i=300V 材质: 紫铜管

型号 ITEM NO	Conductor (mm ²)	尺寸 Dimension(mm)							颜色 color	
		F	L	W	B	DΦ	CΦ	德 German	法 France	
TE 0508	2×0.5	8.0	14.5	5.0	6.5	1.8	1.5	白色 white	白色 white	
TE 7508	2×0.75	8.0	14.7	5.5	6.7	2.1	1.8	蓝色 blue	灰色 gray	
TE 7510	2×0.75	10.0	16.7	5.5	6.7	2.1	1.8	红色 red	红色 red	
TE 1008	2×1.0	8.0	15.1	5.5	7.1	2.3	2.0			
TE 1010	2×1.0	10.0	17.1	5.5	7.1	2.3	2.0	黑色 black	黄色 yellow	
TE 1508	2×1.5	8.0	15.5	6.4	7.2	2.6	2.3			
TE 1512	2×1.5	12.0	19.5	6.4	7.5	2.6	2.3	灰色 gray	蓝色 blue	
TE 2510	2×2.5	10.0	18.5	8.0	8.5	3.3	2.9			
TE 2513	2×2.5	13.0	21.5	8.0	8.5	3.3	2.9	橙色 orange	灰色 gray	
TE 4012	2×4.0	12.0	23.1	8.8	11.1	4.2	3.8	绿色 green	黄色 yellow	
TE 6014	2×6.0	14.0	26.1	9.5	12.1	5.3	4.9	棕色 brown	红色 red	
TE 10-14	2×10.0	14.0	26.6	12.6	12.0	6.9	6.5	乳白 milk	蓝色 blue	
TE 16-14	2×16.0	14.0	31.3	19.0	17.3	8.7	8.3			



片形预绝缘端头

Chip-shaped Pre-insulating Joint



导线截面: 0.5~1.5mm²(美国线规22~16) 最大电流: I_{max}=19A 材质: 紫铜

型号 ITEM NO	尺寸 Dimension(mm)					颜色 color
	B	L	F	H	DΦ	
DBV 1.25-9	2.3	19.0	9.0	10.0	4.3	● 红 red
DBV 1.25-10	2.3	20.0	10.0			
DBV 1.25-11	2.3	21.0	11.0			
DBV 1.25-14	3.0	24.0	14.0			
DBV 1.25-18	2.2	28.0	18.0			

导线截面: 1.5~2.5mm²(美国线规16~14) 最大电流: I_{max}=27A 材质: 紫铜

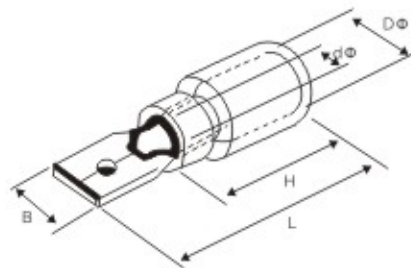
型号 ITEM NO	尺寸 Dimension(mm)					颜色 color
	B	L	F	H	DΦ	
DBV 2-9	2.8	18.0	9.0	10.0	4.9	● 蓝 blue
DBV 2-10	2.8	19.0	10.0			
DBV 2-14	3.0	24.0	14.0			
DBV 2-18	3.0	28.0	18.0			

导线截面: 4~6mm²(美国线规12~10) 最大电流: I_{max}=48A 材质: 紫铜

型号 ITEM NO	尺寸 Dimension(mm)					颜色 color
	B	L	F	H	DΦ	
DBV 5.5-10	2.8	22.5	10.0	12.5	5.6	● 黄 yellow
DBV 5.5-14	4.0	26.5	14.0			
DBV 5.5-18	4.5	30.5	18.0			

公预绝缘接头

Male Pre-insulating Joint



导线截面: 0.5~1.5mm²(美国线规22~16) 最大电流: I_{max}=10A 材质: 黄铜

型号 ITEM NO	Tame Tab (mm)	材料厚度 Thickness of material	尺寸 Dimension(mm)					颜色 color
			B	dΦ	DΦ	L	H	
MDD 1.25-10(5)	0.5 × 2.8	0.5	2.8	1.7	4.3	17.7	10.0	● 红 red
MDD 1.25-110(8)	0.8 × 2.8	0.8	2.8	1.7	4.3	17.7	10.0	
MDD 1.25-187(5)	0.5 × 4.75	0.5	4.75	1.7	4.3	20.0	10.0	
MDD 1.25-187(8)	0.8 × 4.75	0.8	4.75	1.7	4.3	20.0	10.0	
MDD 1.25-250	0.8 × 6.35	0.4 × 2	6.35	1.7	4.3	21.0	10.0	

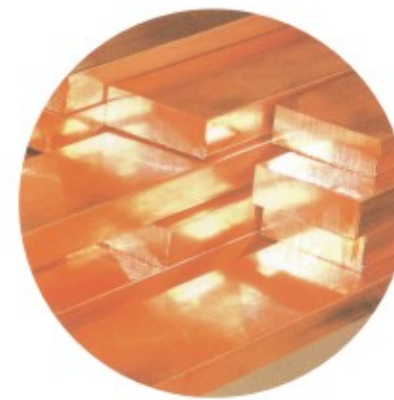
导线截面: 1.5~2.5mm²(美国线规16~14) 最大电流: I_{max}=15A 材质: 黄铜

型号 ITEM NO	Tame Tab (mm)	材料厚度 Thickness of material	尺寸 Dimension(mm)					颜色 color
			B	dΦ	DΦ	L	H	
MDD 2-187(5)	0.5 × 4.75	0.5	4.75	2.3	4.3	20.0	10.0	● 蓝 blue
MDD 2-187(8)	0.8 × 4.75	0.8	4.75	2.3	4.3	20.0	10.0	
MDD 2-250	0.8 × 6.35	0.4 × 2	6.35	2.3	4.3	21.0	10.0	

导线截面: 4~6mm²(美国线规12~10) 最大电流: I_{max}=24A 材质: 黄铜

型号 ITEM NO	Tame Tab (mm)	材料厚度 Thickness of material	尺寸 Dimension(mm)					颜色 color
			B	dΦ	DΦ	L	H	
MDD 5.5-250	0.8 × 6.35	0.4 × 2	6.35	3.4	5.7	25.0	13.0	● 黄 yellow

紫铜排/铝排 Violet copper line



牌号 Trademark	规格(mm) Spec	状态 State
T2 直角 Right angle 圆角 Round angle	3 × 15 × 6000~30 × 200 × 6000	TMY(硬)Hard TMR(软)Soft
T3 直角 Right angle 圆角 Round angle	3 × 15 × 6000~30 × 200 × 6000	Y2 M Y